

**MERCER COUNTY INSURANCE FUND COMMISSION
AGENDA AND REPORTS
FEBRUARY 27, 2017**

**MERCER COUNTY
MCDADE ADMINISTRATION BUILDING
640 SOUTH BROAD STREET
ROOM 211
TRENTON, NJ 08650-8068
10:30 AM**

OPEN PUBLIC MEETINGS ACT - STATEMENT OF COMPLIANCE

In accordance with the Open Public Meetings Act, notice of this meeting was given by:

- I. Advertising the notice in the Trenton Times, The Trentonian and the Princeton Packet**
- II. Filing advance written notice of this meeting with the Commissioners of the Mercer County Insurance Fund Commission; and**
- III. Posting notice on the Public Bulletin Board of the Office of the County Clerk**

**MERCER COUNTY INSURANCE FUND COMMISSION
AGENDA
OPEN PUBLIC MEETING: FEBRUARY 27, 2017
640 S. BROAD STREET, ROOM 211
TRENTON, NJ 08650-8068
10:30 AM**

- ☐ **MEETING CALLED TO ORDER - OPEN PUBLIC MEETING NOTICE READ**
- ☐ **ROLL CALL OF COMMISSIONERS**
- ☐ **APPROVAL OF MINUTES: January 23, 2017 Open Minutes.....Appendix I
January 23, 2017 Closed MinutesHandout**

- ☐ **CORRESPONDENCE:**

- ☐ **COMMITTEE REPORTS**
 - Safety Committee:..... Verbal
 - Claims Committee: Verbal

- ☐ **EXECUTIVE DIRECTOR/ADMINISTRATOR - PERMAPages 3-8**

- ☐ **TREASURER – David Miller**
 - Resolution 16-17 February Bill List - Motion..... Pages 9-10
 - December Treasurer Reports Pages 11-12

- ☐ **ATTORNEY – Arthur R. Sypek, Jr., Esq. Verbal**

- ☐ **CLAIMS SERVICE –Inservco Insurance Services, Inc. - Motion**
 - Resolution 17-17 Authorizing Disclosure of Liability Claims Check Register..... Pages 13-14
 - Liability Claims Payments 1-1-17 to 1-31-17 Pages 15-16

- ☐ **MANAGED CARE – First MCO**
 - Monthly Summary Report – JanuaryPage 17

- ☐ **CEL SAFETY DIRECTOR – J.A. Montgomery Risk Control**
 - Monthly Report..... Pages 18-21

- ☐ **RISK MANAGER CONSULTANT – Borden Perlman Salisbury & Kelly**
 - Monthly Report..... Verbal

- ☐ **OLD BUSINESS**
- ☐ **NEW BUSINESS:**
- ☐ **PUBLIC COMMENT**

- ☐ **CLOSED SESSION – Payment Authorization Requests (PARS)Pages 22-24**
 - Resolution 18-17 Executive Session for purpose as permitted by the Open Public Meetings Act, more specifically to discuss PARS related to pending or anticipated litigation as identified in the list of claims prepared by third-party claim administrator Inservco Insurance Services, Inc. and attached to this agenda.
 - ☐ Motion for Executive Session

☐ APPROVAL OF PARS - Motion

☐ MEETING ADJOURNMENT

☐ NEXT SCHEDULED MEETING: **March 27, 2017, MERCER COUNTY, McDADE
ADMINISTRATION BUILDING, 640 S. BROAD STREET, TRENTON, NJ 08650-8068
10:30 AM**

MERCER COUNTY INSURANCE FUND COMMISSION

9 Campus Drive, Suite 216
Parsippany, NJ 07054
Telephone (201) 881-7632 Fax (201) 881-7633

Date: February 27, 2017

Memo to: Commissioners of the Mercer County Insurance Fund Commission

From: PERMA Risk Management Services

Subject: Executive Director's Report

- ☐ **Certificate of Insurance Issuance Report (Appendix II)** – Attached in Appendix II is the certificate of issuance report from the CEL listing the 2017 renewal certificates and certificates issued for the period of 1/1/17 to 1/31/17. There were 65 certificate of insurance issued during this period.
- ☐ **NJ Excess Counties Insurance Fund (CELJIF)** - The CEL's Reorganization meeting was held on February 23, 2017. Executive Director will provide a verbal update of the meeting and a summary report will be included in the next agenda. The CEL is scheduled to meet again on April 27, 2017.
- ☐ **MCIFC Property & Casualty Financial Fast Track (Page 5)** – Included in the agenda on page 5 is a copy of the Financial Fast Track as of **December 31, 2016**. The report indicates the Commission has a surplus of **\$5,327,420**. Line 10 of the report "Investment in Joint Venture" is Mercer County Insurance Fund Commission's share of equity in the CEL. MCIFC's equity in the CEL as of December 31, 2016 is **\$744,150**. The total cash balance is **\$797,533**.
- ☐ **NJ CEL Property and Casualty Financial Fast Track (Page 6)** – Included in the agenda on page 6 is a copy of the CEL Financial Fast Track for the month of December. As of **December 31, 2016** the Fund has a surplus of **\$8,316,420**. The cash balance is **\$19,865,780**.
- ☐ **Claims Tracking Reports (Pages 7-8)** – Included in the agenda on pages 7-8 are copies of the Claim Activity Report and the Claims Management Report Expected Loss Ratio Analysis report as of January 31, 2017. The Executive Director will review the reports with the Commission.
- ☐ **2017 Professional Service Contracts** – The Request for Proposals for Third Party Claims Administrator (TPA) is posted on the County of Mercer Website. The responses are due on March 10, 2017 at 11:00 AM. We will ask Chairman Mair to provide an update on the other Professional Service Contracts.
- ☐ **Potential New Membership** – Executive Director will provide a verbal update regarding the Mercer County Vo-Tech and Special Services School Districts.

- ❑ **2017 Excess Insurance and Ancillary Coverage Policies** - The CEL renewal policies will again be available electronically through the Conner Strong & Buckelew secure website for those authorized representatives who were designated by their respective member entity. In addition to this, certain Commission professionals are granted access. The CEL Underwriting Manager is in the process of reviewing the policies and will release an e-mail with instructions to access the website when the policies are available. The limit/retention schematics and Plan of Risk Management will also be available on this website. The policies are expected to be available by 4/1/17.
- ❑ **2017 Assessment Bills** – The 2017 Assessment Bills were e-mailed to the member entities. The first payment is due on March 15, 2017.

MERCER COUNTY INSURANCE COMMISSION						
FINANCIAL FAST TRACK REPORT						
AS OF December 31, 2016						
ALL YEARS COMBINED						
		THIS MONTH	YTD CHANGE	PRIOR YEAR END	FUND BALANCE	
1.	UNDERWRITING INCOME	662,621	7,951,456	15,321,408	23,272,864	
2.	CLAIM EXPENSES					
	Paid Claims	160,983	2,153,730	2,337,196	4,490,926	
	Case Reserves	(238,591)	339,779	2,201,600	2,541,379	
	IBNR	(151,636)	1,086,354	1,995,683	3,082,038	
	Discounted Claim Value	7,071	(61,400)	(109,981)	(171,381)	
	TOTAL CLAIMS	(222,172)	3,518,463	6,424,499	9,942,961	
3.	EXPENSES					
	Excess Premiums	198,519	2,382,227	4,688,141	7,070,368	
	Administrative	48,103	579,021	1,097,244	1,676,265	
	TOTAL EXPENSES	246,622	2,961,248	5,785,385	8,746,633	
4.	UNDERWRITING PROFIT (1-2-3)	638,171	1,471,746	3,111,525	4,583,270	
5.	INVESTMENT INCOME	0	0	0	0	
6.	PROFIT (4 + 5)	638,171	1,471,746	3,111,525	4,583,270	
7.	CEL APPROPRIATION CANCELLATION	0	0	0	0	
8.	DIVIDEND INCOME	0	0	0	0	
9.	DIVIDEND EXPENSE	0	0	0	0	
10.	INVESTMENT IN JOINT VENTURE	69,845	375,320	368,830	744,150	
11.	SURPLUS (6 + 7 + 8)	708,016	1,847,065	3,480,354	5,327,420	
SURPLUS (DEFICITS) BY FUND YEAR						
	2014	137,324	483,487	1,863,493	2,346,979	
	2015	255,142	301,066	1,616,862	1,917,929	
	2016	315,549	1,062,513		1,062,513	
TOTAL SURPLUS (DEFICITS)		708,016	1,847,065	3,480,355	5,327,420	
TOTAL CASH					797,533	
CLAIM ANALYSIS BY FUND YEAR						
FUND YEAR 2014						
	Paid Claims	15,803	257,766	1,489,439	1,747,206	
	Case Reserves	(104,758)	(446,865)	854,019	407,154	
	IBNR	(41,044)	(204,901)	771,021	566,120	
	Discounted Claim Value	3,123	12,740	(43,681)	(30,942)	
	TOTAL FY 2014 CLAIMS	(126,877)	(381,260)	3,070,798	2,689,538	
FUND YEAR 2015						
	Paid Claims	59,614	780,654	847,757	1,628,411	
	Case Reserves	(174,160)	(574,290)	1,347,581	773,291	
	IBNR	(123,591)	(517,501)	1,224,662	707,161	
	Discounted Claim Value	8,474	21,067	(66,300)	(45,233)	
	TOTAL FY 2015 CLAIMS	(229,663)	(290,070)	3,353,701	3,063,630	
FUND YEAR 2016						
	Paid Claims	85,567	1,115,309		1,115,309	
	Case Reserves	40,328	1,360,934		1,360,934	
	IBNR	12,999	1,808,757		1,808,757	
	Discounted Claim Value	(4,526)	(95,207)		(95,207)	
	TOTAL FY 2016 CLAIMS	134,368	4,189,793	0	4,189,793	
COMBINED TOTAL CLAIMS		(222,172)	3,518,463	6,424,499	9,942,961	
This report is based upon information which has not been audited nor certified by an actuary and as such may not truly represent the condition of the fund.						

NEW JERSEY COUNTIES EXCESS JIF					
FINANCIAL FAST TRACK REPORT					
AS OF December 31, 2016					
ALL YEARS COMBINED					
		THIS	YTD	PRIOR	FUND
		MONTH	CHANGE	YEAR END	BALANCE
1.	UNDERWRITING INCOME	1,772,241	21,278,896	76,187,004	97,465,900
2.	CLAIM EXPENSES				
	Paid Claims	11,499	1,631,225	1,089,974	2,721,199
	Case Reserves	(7,383)	211,137	2,413,317	2,624,454
	IBNR	(104,247)	386,292	9,188,910	9,575,203
	Discounted Claim Value	23,619	(63,930)	(651,074)	(715,004)
	TOTAL CLAIMS	(76,513)	2,164,725	12,041,128	14,205,852
3.	EXPENSES				
	Excess Premiums	1,230,268	15,046,309	52,056,606	67,102,915
	Administrative	99,552	1,510,111	5,652,271	7,162,382
	TOTAL EXPENSES	1,329,819	16,556,419	57,708,877	74,265,297
4.	UNDERWRITING PROFIT (1-2-3)	518,935	2,557,752	6,436,999	8,994,751
5.	INVESTMENT INCOME	4,230	44,496	184,725	229,221
6.	PROFIT (4+5)	523,165	2,602,248	6,621,724	9,223,972
7.	Dividend	0	150,000	150,000	300,000
8.	Cancelled Appropriations	0	0	607,551	607,551
9.	SURPLUS (6-7-8)	523,165	2,452,248	5,864,173	8,316,421
SURPLUS (DEFICITS) BY FUND YEAR					
	2010	119,497	79,950	642,182	722,132
	2011	23,911	(228,041)	1,149,228	921,187
	2012	(186,502)	76,830	477,778	554,609
	2013	100,496	17,391	1,259,797	1,277,188
	2014	64,485	630,991	1,417,746	2,048,737
	2015	168,000	72,503	917,441	989,944
	2016	233,278	1,802,624		1,802,624
	TOTAL SURPLUS (DEFICITS)	523,165	2,452,248	5,864,172	8,316,420
	TOTAL CASH				19,865,780
CLAIM ANALYSIS BY FUND YEAR					
FUND YEAR 2010					
	Paid Claims	0	901	163,454	164,355
	Case Reserves	0	(0)	1	1
	IBNR	(125,645)	(161,546)	326,545	164,999
	Discounted Claim Value	6,363	8,203	(11,008)	(2,805)
	TOTAL FY 2010 CLAIMS	(119,283)	(152,442)	478,992	326,550
FUND YEAR 2011					
	Paid Claims	4,185	252,570	144,097	396,667
	Case Reserves	(185)	145,365	262,007	407,372
	IBNR	(39,000)	(242,935)	623,896	380,961
	Discounted Claim Value	11,446	2,492	(41,637)	(39,146)
	TOTAL FY 2011 CLAIMS	(23,554)	157,492	988,363	1,145,854
FUND YEAR 2012					
	Paid Claims	3,373	617,082	515,889	1,132,971
	Case Reserves	(3,374)	(425,807)	856,270	430,462
	IBNR	199,645	(275,974)	1,120,043	844,069
	Discounted Claim Value	(12,740)	12,663	(82,267)	(69,604)
	TOTAL FY 2012 CLAIMS	186,904	(72,037)	2,409,934	2,337,897
FUND YEAR 2013					
	Paid Claims	0	500,452	15,975	516,427
	Case Reserves	0	112,427	511,304	623,730
	IBNR	(105,000)	(647,878)	1,657,721	1,009,843
	Discounted Claim Value	5,093	24,991	(110,993)	(86,001)
	TOTAL FY 2013 CLAIMS	(99,907)	(10,009)	2,074,007	2,063,999
FUND YEAR 2014					
	Paid Claims	3,926	148,023	120,096	268,119
	Case Reserves	(3,927)	(171,387)	313,106	141,719
	IBNR	(74,999)	(661,637)	2,411,798	1,750,161
	Discounted Claim Value	11,296	63,175	(164,745)	(101,570)
	TOTAL FY 2014 CLAIMS	(63,704)	(621,825)	2,680,255	2,058,430
FUND YEAR 2015					
	Paid Claims	15	112,197	130,464	242,661
	Case Reserves	85	550,452	470,629	1,021,082
	IBNR	(185,100)	(737,649)	3,048,907	2,311,258
	Discounted Claim Value	17,899	36,004	(240,424)	(204,420)
	TOTAL FY 2015 CLAIMS	(167,101)	(38,996)	3,409,576	3,370,580
FUND YEAR 2016					
	Paid Claims	0	0		0
	Case Reserves	18	88		88
	IBNR	225,852	3,113,912		3,113,912
	Discounted Claim Value	(15,738)	(211,458)		(211,458)
	TOTAL FY 2016 CLAIMS	210,132	2,902,542	0	2,902,542
	COMBINED TOTAL CLAIMS	(76,513)	2,164,725	12,041,128	14,205,852
This report is based upon information which has not been audited nor certified by an actuary and as such may not truly represent the condition of the fund.					

Mercer County Insurance Fund Commission									
CLAIM ACTIVITY REPORT									
AS OF	January 31, 2017								
COVERAGE LINE-PROPERTY									
CLAIM COUNT - OPEN CLAIMS									
Year	2010	2011	2012	2013	2014	2015	2016	2017	TOTAL
December-16	0	0	0	0	0	2	21	0	23
January-17	0	0	0	0	0	2	15	6	23
NET CHGE	0	0	0	0	0	0	-6	6	0
Limited Reserves									\$1,583
Year	2010	2011	2012	2013	2014	2015	2016	2017	TOTAL
December-16	\$0	\$0	\$0	\$0	\$0	\$500	\$34,500	\$0	\$35,000
January-17	\$0	\$0	\$0	\$0	\$0	\$500	\$25,500	\$10,400	\$36,400
NET CHGE	\$0	\$0	\$0	\$0	\$0	\$0	(\$9,000)	\$10,400	\$1,400
Ltd Incurred	\$0	\$0	\$0	\$0	\$19,168	\$53,863	\$25,599	\$10,400	\$109,030
COVERAGE LINE-GENERAL LIABILITY									
CLAIM COUNT - OPEN CLAIMS									
Year	2010	2011	2012	2013	2014	2015	2016	2017	TOTAL
December-16	0	0	0	0	3	10	34	0	47
January-17	0	0	0	0	3	10	37	3	53
NET CHGE	0	0	0	0	0	0	3	3	6
Limited Reserves									\$3,425
Year	2010	2011	2012	2013	2014	2015	2016	2017	TOTAL
December-16	\$0	\$0	\$0	\$0	\$19,386	\$70,944	\$82,200	\$0	\$172,530
January-17	\$0	\$0	\$0	\$0	\$19,386	\$70,944	\$88,170	\$3,000	\$181,500
NET CHGE	\$0	\$0	\$0	\$0	\$0	\$0	\$5,970	\$3,000	\$8,970
Ltd Incurred	\$0	\$0	\$0	\$0	\$21,863	\$90,273	\$97,761	\$3,000	\$212,897
COVERAGE LINE-AUTO LIABILITY									
CLAIM COUNT - OPEN CLAIMS									
Year	2010	2011	2012	2013	2014	2015	2016	2017	TOTAL
December-16	0	0	0	0	0	2	2	0	4
January-17	0	0	0	0	0	2	4	1	7
NET CHGE	0	0	0	0	0	0	2	1	3
Limited Reserves									\$15,336
Year	2010	2011	2012	2013	2014	2015	2016	2017	TOTAL
December-16	\$0	\$0	\$0	\$0	\$0	\$7,955	\$99,900	\$0	\$107,855
January-17	\$0	\$0	\$0	\$0	\$0	\$7,955	\$99,200	\$200	\$107,355
NET CHGE	\$0	\$0	\$0	\$0	\$0	\$0	(\$700)	\$200	(\$500)
Ltd Incurred	\$0	\$0	\$0	\$0	\$10,891	\$13,920	\$119,228	\$200	\$144,239
COVERAGE LINE-WORKERS COMP.									
CLAIM COUNT - OPEN CLAIMS									
Year	2010	2011	2012	2013	2014	2015	2016	2017	TOTAL
December-16	0	0	0	0	15	24	51	0	90
January-17	0	0	0	0	14	24	49	7	94
NET CHGE	0	0	0	0	-1	0	-2	7	4
Limited Reserves									\$27,621
Year	2010	2011	2012	2013	2014	2015	2016	2017	TOTAL
December-16	\$0	\$0	\$0	\$0	\$387,772	\$693,892	\$1,194,338	\$0	\$2,276,002
January-17	\$0	\$0	\$0	\$0	\$376,429	\$694,675	\$1,201,868	\$323,432	\$2,596,404
NET CHGE	\$0	\$0	\$0	\$0	(\$11,342)	\$782	\$7,530	\$323,432	\$320,402
Ltd Incurred	\$0	\$0	\$0	\$0	\$2,093,311	\$2,249,626	\$2,376,623	\$325,250	\$7,044,810
TOTAL ALL LINES COMBINED									
CLAIM COUNT - OPEN CLAIMS									
Year	2010	2011	2012	2013	2014	2015	2016	2017	TOTAL
December-16	0	0	0	0	18	38	108	0	164
January-17	0	0	0	0	17	38	105	17	177
NET CHGE	0	0	0	0	-1	0	-3	17	13
Limited Reserves									\$16,507
Year	2010	2011	2012	2013	2014	2015	2016	2017	TOTAL
December-16	\$0	\$0	\$0	\$0	\$407,157	\$773,291	\$1,410,938	\$0	\$2,591,386
January-17	\$0	\$0	\$0	\$0	\$395,815	\$774,074	\$1,414,738	\$337,032	\$2,921,658
NET CHGE	\$0	\$0	\$0	\$0	(\$11,342)	\$782	\$3,800	\$337,032	\$330,272
Ltd Incurred	\$0	\$0	\$0	\$0	\$2,145,232	\$2,407,682	\$2,619,211	\$338,850	\$7,510,976

Mercer County Insurance Fund Commission

CLAIMS MANAGEMENT REPORT

EXPECTED LOSS RATIO ANALYSIS

AS OF

January 31, 2017

FUND YEAR 2014 -- LOSSES CAPPED AT RETENTION

	Budget	Current		37		MONTH	Last Month		36		MONTH	Last Year		25		MONTH
		Unlimited	Limited	Actual		TARGETED	Unlimited	Limited	Actual		TARGETED	Unlimited	Limited	Actual		TARGETED
		Incurred	Incurred	31-Jan-17			Incurred	Incurred	31-Dec-16			Incurred	Incurred	31-Jan-16		
PROPERTY	62,322	19,168	19,168	30.76%	62,322	100.00%	19,168	19,168	30.76%	62,322	100.00%	20,168	20,168	32.36%	62,322	100.00%
GEN LIABILITY	124,157	21,863	21,863	17.61%	112,706	90.78%	21,863	21,863	17.61%	111,924	90.15%	158,352	158,352	127.54%	100,006	80.55%
AUTO LIABILITY	127,016	10,891	10,891	8.57%	111,477	87.77%	10,891	10,891	8.57%	110,738	87.18%	10,891	10,891	8.57%	98,723	77.72%
WORKER'S COMP	4,356,301	2,093,311	2,093,311	48.05%	4,280,957	98.27%	2,102,021	2,102,021	48.25%	4,273,397	98.10%	2,171,067	2,171,067	49.84%	4,103,524	94.20%
TOTAL ALL LINES	4,669,797	2,145,232	2,145,232	45.94%	4,567,461	97.81%	2,153,942	2,153,942	46.12%	4,558,381	97.61%	2,360,477	2,360,477	50.55%	4,364,574	93.46%
NET PAYOUT %	\$1,749,417				37.46%											

FUND YEAR 2015 -- LOSSES CAPPED AT RETENTION

	Budget	Current		25		MONTH	Last Month		24		MONTH	Last Year		13		MONTH
		Unlimited	Limited	Actual		TARGETED	Unlimited	Limited	Actual		TARGETED	Unlimited	Limited	Actual		TARGETED
		Incurred	Incurred	31-Jan-17			Incurred	Incurred	31-Dec-16			Incurred	Incurred	31-Jan-16		
PROPERTY	80,948	53,863	53,863	66.54%	80,948	100.00%	53,863	53,863	66.54%	80,948	100.00%	86,875	86,875	107.32%	77,410	95.63%
GEN LIABILITY	155,896	90,273	90,273	57.91%	125,571	80.55%	90,273	90,273	57.91%	123,766	79.39%	139,042	139,042	89.19%	97,029	62.24%
AUTO LIABILITY	131,580	13,920	13,920	10.58%	102,270	77.72%	13,920	13,920	10.58%	100,581	76.44%	26,681	26,681	20.28%	71,267	54.16%
WORKER'S COMP	4,449,750	2,249,626	2,249,626	50.56%	4,191,550	94.20%	2,243,645	2,243,645	50.42%	4,160,978	93.51%	2,187,037	2,187,037	49.15%	3,120,661	70.13%
TOTAL ALL LINES	4,818,174	2,407,682	2,407,682	49.97%	4,500,339	93.40%	2,401,702	2,401,702	49.85%	4,466,273	92.70%	2,439,634	2,439,634	50.63%	3,366,367	69.87%
NET PAYOUT %	\$1,633,608				33.91%											

FUND YEAR 2016 -- LOSSES CAPPED AT RETENTION

	Budget	Current		13		MONTH	Last Month		12		MONTH	Last Year		1		MONTH
		Unlimited	Limited	Actual		TARGETED	Unlimited	Limited	Actual		TARGETED	Unlimited	Limited	Actual		TARGETED
		Incurred	Incurred	31-Jan-17			Incurred	Incurred	31-Dec-16			Incurred	Incurred	31-Jan-16		
PROPERTY	80,948	25,599	25,599	31.62%	77,410	95.63%	34,599	34,599	42.74%	77,093	95.24%	22,600	22,600	27.92%	4,857	6.00%
GEN LIABILITY	155,896	97,761	97,761	62.71%	97,029	62.24%	91,791	91,791	58.88%	93,817	60.18%	0	0	0.00%	1,559	1.00%
AUTO LIABILITY	131,580	119,228	119,228	90.61%	71,267	54.16%	116,809	116,809	88.77%	67,325	51.17%	0	0	0.00%	1,316	1.00%
WORKER'S COMP	4,616,644	2,376,623	2,376,623	51.48%	3,237,705	70.13%	2,283,048	2,283,048	49.45%	2,958,060	64.07%	52,250	52,250	1.13%	23,083	0.50%
TOTAL ALL LINES	4,985,068	2,619,211	2,619,211	52.54%	3,483,411	69.88%	2,526,247	2,526,247	50.68%	3,196,295	64.12%	74,850	74,850	1.50%	30,815	0.62%
NET PAYOUT %	\$1,204,474				24.16%											

FUND YEAR 2017 -- LOSSES CAPPED AT RETENTION

	Budget	Current		1		MONTH	Last Month		0		MONTH	Last Year		-11		MONTH
		Unlimited	Limited	Actual		TARGETED	Unlimited	Limited	Actual		TARGETED	Unlimited	Limited	Actual		TARGETED
		Incurred	Incurred	31-Jan-17			Incurred	Incurred	31-Dec-16			Incurred	Incurred	31-Jan-16		
PROPERTY	83,000	10,400	10,400	12.53%	4,980	6.00%	0	0	0.00%	0	0.00%	0	0	N/A	N/A	N/A
GEN LIABILITY	159,000	3,000	3,000	1.89%	1,590	1.00%	0	0	0.00%	0	0.00%	0	0	N/A	N/A	N/A
AUTO LIABILITY	134,000	200	200	0.15%	1,340	1.00%	0	0	0.00%	0	0.00%	0	0	N/A	N/A	N/A
WORKER'S COMP	4,709,000	325,250	325,250	6.91%	23,545	0.50%	0	0	0.00%	0	0.00%	0	0	N/A	N/A	N/A
TOTAL ALL LINES	5,085,000	338,850	338,850	6.66%	31,455	0.62%	0	0	0.00%	0	0.00%	0	0	N/A	N/A	N/A

**MERCER COUNTY INSURANCE FUND COMMISSION
BILLS LIST**

Resolution No. 16-17

FEBRUARY 2017

WHEREAS, the Treasurer has certified that funding is available to pay the following bills:

BE IT RESOLVED that the Mercer County Insurance Fund Commission, hereby authorizes the Commission Treasurer to issue warrants in payment of the following claims; and

FURTHER, that this authorization shall be made a permanent part of the records of the Commission

FUND YEAR 2015

<u>CheckNumber</u>	<u>VendorName</u>	<u>Comment</u>	<u>InvoiceAmount</u>
000282			
000282	BOWMAN & COMPANY LLP	AUDITORS FEE 1/23/17 FOR 2015	9,200.00
			9,200.00
TOTAL PAYMENTS FY 2015			9,200.00

FUND YEAR 2016

<u>CheckNumber</u>	<u>VendorName</u>	<u>Comment</u>	<u>InvoiceAmount</u>
000283			
000283	PERMA RISK MANAGEMENT SERVICES	1099 AATRIX E-FILING - 2016	14.95
			14.95
000284			
000284	NJ ADVANCE MEDIA	ACCT: 1153600 - 12/2/16 - ADV CLOSED SES	51.10
			51.10
TOTAL PAYMENTS FY 2016			66.05

FUND YEAR 2017

<u>CheckNumber</u>	<u>VendorName</u>	<u>Comment</u>	<u>InvoiceAmount</u>
000285			
000285	NEW JERSEY COUNTIES EXCESS JIF	CEL 1ST 2017 INSTALLMENT	1,434,023.47
			1,434,023.47
000286			
000286	BORDEN PERLMAN SALISBURY&KELLY	INSURANCE CONSULTING FEE 02/2017	5,000.00
			5,000.00
000287			
000287	PERMA RISK MANAGEMENT SERVICES	POSTAGE FEE 01/2017	1.78
000287	PERMA RISK MANAGEMENT SERVICES	EXECUTIVE DIRECTOR FEE 02/2017	13,096.87
			13,098.65
000288			
000288	THE ACTUARIAL ADVANTAGE	ACTUARIAL SERVICES - 02/2017	625.00
			625.00
000289			
000289	INSERVCO INSURANCE SERVICES	MONTHLY CLAIMS SERVICES FEE 02/2017	16,666.66
			16,666.66
000290			
000290	PACKET MEDIA LLC	ACCT: 32129 - 1/13/17 - EXECUTIVE SESSN	14.00
			14.00
000291			
000291	THE TRENTONIAN	ACCT: 884004 - 1/12/17 - JAN CLOSED SESS	15.05
			15.05
000292			
000292	SPARK CREATIVE GROUP LLC	PROGRAMMING & WEBSITE UPDATE 01/2017	315.00

000293			315.00
000293	J.A. MONTGOMERY RISK CONTROL	RISK CONTROL SERVICE 02/2017	10,055.00
			10,055.00
	TOTAL PAYMENTS FY 2017	1,479,812.83	

TOTAL PAYMENTS ALL FUND YEARS \$ 1,489,078.88

Chairperson

Attest:

Dated:_____

I hereby certify the availability of sufficient unencumbered funds in the proper accounts to fully pay the above claims.

Treasurer

MERCER COUNTY INSURANCE COMMISSION							
SUMMARY OF CASH TRANSACTIONS - ALL FUND YEARS COMBINED							
Current Fund Year: 2016 Month Ending: December							
	Property	Liability	Auto	Worker's Comp	NJ CEL	Admin	TOTAL
OPEN BALANCE	44,644.91	213,400.47	198,086.83	3,736,673.76	(2,913,125.71)	(582,438.48)	697,241.78
RECEIPTS							
Assessments	3,178.79	6,141.55	5,184.83	175,358.33	96,042.79	22,714.49	308,620.78
Refunds	0.00	0.00	0.00	0.00	0.00	0.00	0.00
Invest Pymnts	0.00	0.00	0.00	0.00	0.00	0.00	0.00
Invest Adj	0.00	0.00	0.00	0.00	0.00	0.00	0.00
Subtotal Invest	0.00	0.00	0.00	0.00	0.00	0.00	0.00
Other *	0.00	0.00	0.00	0.00	0.00	0.00	0.00
TOTAL	3,178.79	6,141.55	5,184.83	175,358.33	96,042.79	22,714.49	308,620.78
EXPENSES							
Claims Transfers	99.00	12,000.00	0.00	148,884.47	0.00	0.00	160,983.47
Expenses	0.00	0.00	0.00	0.00	0.00	47,270.95	47,270.95
Other *	0.00	0.00	0.00	0.00	0.00	75.00	75.00
TOTAL	99.00	12,000.00	0.00	148,884.47	0.00	47,345.95	208,329.42
END BALANCE	47,724.70	207,542.02	203,271.66	3,763,147.62	(2,817,082.92)	(607,069.94)	797,533.14

SUMMARY OF CASH AND INVESTMENT INSTRUMENTS			
MERCER COUNTY INSURANCE COMMISSION			
ALL FUND YEARS COMBINED			
CURRENT MONTH	December		
CURRENT FUND YEAR	2016		
Description: ID Number: Maturity (Yrs) Purchase Yield: TOTAL for All Accts & instruments		MCIFC General A/C	MCIFC Claims A/C
Opening Cash & Investment Balance	\$697,241.78	841482.26	-144240.48
Opening Interest Accrual Balance	\$0.00	0	0
1 Interest Accrued and/or Interest Cost	\$0.00	\$0.00	\$0.00
2 Interest Accrued - discounted Instr.s	\$0.00	\$0.00	\$0.00
3 (Amortization and/or Interest Cost)	\$0.00	\$0.00	\$0.00
4 Accretion	\$0.00	\$0.00	\$0.00
5 Interest Paid - Cash Instr.s	\$0.00	\$0.00	\$0.00
6 Interest Paid - Term Instr.s	\$0.00	\$0.00	\$0.00
7 Realized Gain (Loss)	\$0.00	\$0.00	\$0.00
8 Net Investment Income	\$0.00	\$0.00	\$0.00
9 Deposits - Purchases	\$308,620.78	\$47,270.95	\$261,349.83
10 (Withdrawals - Sales)	-\$208,329.42	-\$47,285.95	-\$161,043.47
Ending Cash & Investment Balance	\$797,533.14	\$841,467.26	-\$43,934.12
Ending Interest Accrual Balance	\$0.00	\$0.00	\$0.00
Plus Outstanding Checks	\$243,426.68	\$47,270.95	\$196,155.73
(Less Deposits in Transit)	\$0.00	\$0.00	\$0.00
Balance per Bank	\$1,040,959.82	\$888,738.21	\$152,221.61

RESOLUTION NO. 17-17

**MERCER COUNTY INSURANCE FUND COMMISSION
AUTHORIZING DISCLOSURE OF LIABILITY CLAIMS CHECK REGISTER**

WHEREAS, the MERCER COUNTY INSURANCE FUND COMMISSION (hereinafter "MCIFC") is duly constituted as an Insurance Commission pursuant to N.J.S.A. 40A:10-6 et seq.; and

WHEREAS, the MCIFC is subject to the requirements of the Open Public Meetings Act, N.J.S.A. 10:4-6 et seq.; and

WHEREAS, the Open Public Meetings Act requires all meetings of public bodies be open to the public; and

WHEREAS, the Open Public Meetings Act further provides a public body may permissibly exclude the public from a portion of a meeting at which the public body discusses items per the Open Public Meetings Act at N.J.S.A. 10:4-12.b.(1) thru (9) recognized as requiring confidentiality, and

WHEREAS, it is necessary and appropriate for the MCIFC to discuss certain matters in a meeting not open to the public consistent with N.J.S.A. 10:4-12.b.(7); and

WHEREAS, the MCIFC is a public agency which must comply with the Open Public Records Act (OPRA) N.J.S.A. 47: 1A-1 to -13; and

WHEREAS, the MCIFC must comply with OPRA and reported New Jersey Case Law interpreting same; and

WHEREAS, the MCIFC did hold a closed session from which the public was excluded on February 27, 2017 at which time certain items were discussed as were referenced in a separate resolution authorizing said closed session and it being determined certain liability & property claim payment information can be made public at this time; and

NOW THEREFORE BE IT RESOLVED by the Commissioners of said MERCER County Insurance Fund Commission pursuant to both the Open Public Meetings Act and the Open Public Records Act as follows:

The attached financial transaction logs generated by third party administrator Inservco Insurances Inc. for the period January 1, 2017 to January 31, 2017 and related to all non-workers compensation payments are hereby approved for distribution to the listed claimants and for disclosure to the general public

ADOPTED by THE MERCER COUNTY INSURANCE FUND COMMISSION at a properly noticed meeting held on February 27, 2017.

ADOPTD:

ANDREW A. MAIR, CHAIRMAN

DATE

ATTEST:

K. MEGAN CLARK HUGHES, VICE CHAIR

DATE

Mercer County Ins Fund Comm - 396
Financial Transaction Log - Liability Claim Payments
Monthly / Detail / By Coverage / By Payment Type / By Check Number
01/01/2017 Thru 01/31/2017

Type	Check #	Claim #	Claimant Name	From Date	To Date	Payee Name	Trans. Date	Payment Description	Amnt. Requested	Amnt. Paid
------	---------	---------	---------------	-----------	---------	------------	-------------	---------------------	-----------------	------------

Inservco Report Terminology

Reporting Name	Business Name	Business Description
Amount/Amnt Paid	Amount Paid	Amount actually paid or received
Amount/Amnt Requested	Amount Requested	Amount requested to be paid
As Of Date/To Date	Report End Date	Ending date of transactions on report; usually month end
Payment Type	Type	Types of transactions—Computer, Manual, Refund, Recovery, Stop Pay, Void
Report Begin Date	Report Begin Date	Beginning date of transactions on report; usually beginning of month or inception
Trans Date	Transaction Date	Issue date for computer issued payments and add date for all other type entries

Mercer County Ins Fund Comm - 396
Financial Transaction Log - Liability Claim Payments
Monthly / Detail / By Coverage / By Payment Type / By Check Number
01/01/2017 Thru 01/31/2017

Type	Check #	Claim #	Claimant Name	From Date	To Date	Payee Name	Trans. Date	Payment Description	Amt. Requested	Amt. Paid
Coverage: Auto Liability										
C	10892	3960001422	001 WALL, MARY	12/21/2016	12/21/2016	DJS ASSOCIATES INC	1/9/2017	RETAINER FEE	2,300.00	2,300.00
C	11018	3960001493	001 MERCADO, JOSE	11/23/2016	11/23/2016	JOSE MERCADO	1/23/2017	Full & Final Settlement of All Claims	819.45	819.45
Total for Coverage: Auto Liability							Number of entries: 2		3,119.45	3,119.45
Total for Mercer County Ins Fund Comm - 396							Number of entries: 2		3,119.45	3,119.45



First Managed Care Option, Inc.

First MCO Bill Review Services

MERCER CO INS COMM

Medical Savings by Month

NJ

Month of Reprice Service	Provider Billed Amount	First MCO Repriced	U & C / Fee Schedule	Savings	% of Savings	# of Bills	In Network	Out Of Network	% PPO Penetration	# of Appeals	FMCO Fee	Net Savings
Total 2014	\$822,559	\$509,923	\$814,817	\$312,636	38%	752	618	134	82%	6	\$61,563	\$251,073
Total 2015	\$718,860	\$435,127	\$706,183	\$283,733	39%	695	558	137	80%	18	\$56,661	\$227,072
Total 2016	\$1,310,806	\$661,339	\$1,430,976	\$649,467	50%	1,311	1,172	139	89%	18	\$129,313	\$520,155
Jan-17	\$35,284	\$24,951	\$40,131	\$10,334	29%	80	70	10	88%	0	\$2,067	\$8,267
Total 2017	\$35,284	\$24,951	\$40,131	\$10,334	29%	80	70	10	88%	0	\$2,067	\$8,267
Total to Date	\$2,887,510	\$1,631,340	\$2,992,106	\$1,256,170	44%	2,838	2,418	420	85%	42	\$249,603	\$1,006,567

Report Run Date:02/01/2017

MCC



**MERCER COUNTY INSURANCE FUND COMMISSION
SAFETY DIRECTOR'S REPORT**

TO: Fund Commissioners
FROM: J.A. Montgomery Risk Control, Safety Director
DATE: February 14, 2017

**January - February 2017
RISK CONTROL ACTIVITIES**

David McHale, Public Sector Director dmchale@jamontgomery.com Office: 732-736-5213 Cell: 732-673-4802	Glenn Prince, Associate Public Sector Director gprince@jamontgomery.com Office: 856-552-4744 Cell: 609-238-3949	Natalie Dougherty, Executive Assistant ndougherty@jamontgomery.com Office: 856-552-4738
---	---	---

MEETINGS ATTENDED / LOSS CONTROL VISITS CONDUCTED

- **January 18:** Attended the MCIFC DOT Safety Committee meeting in Trenton.
- **January 23:** Attended the MCIFC meeting in Trenton.

January 23: Attended the MCIFC Claims Committee meeting in Trenton

UPCOMING MEETINGS / LOSS CONTROL VISITS PLANNED

- **February 15:** Plan to attend the MCIFC Accident Review Panel meeting in Trenton.
- **February 27:** Plan to attend the MCIFC meeting in Trenton.
- **February 27:** Plan to attend the MCIFC Claims Committee meeting in Trenton.

SAFETY DIRECTOR BULLETINS

- PEOSH Reporting & Recording – January 23.
- Workplace Injury & Illness Recordkeeping Webinar – February 2.

NJPEOSH Recording and Reporting of Occupational Injuries and Illnesses

February 1st is the deadline to tabulate the Log of Work-Related Injuries and Illnesses (NJOSH-300). The Summary Log (NJOSH-300A) must be posted in a visible area for each establishment, where notices to employees are posted, from February 1 to April 30 of each year.

New Jersey requires all public employers to *record* occupational injuries and illnesses. In addition, certain serious injuries must be *reported* directly to New Jersey PEOSH within specified timeframes. The complete rules for recording and reporting injuries can be accessed at <http://nj.gov/health/peosh/record.shtml>

Recording of Occupational Injuries

There are two important forms for the recording of injuries. The *Log of Work-Related Injuries and Illnesses (NJOSH-300)* is a listing of work-related injuries and illness that is maintained throughout the year. Injuries and illnesses are entered into the *Log* within 7 days of being notified of the injury / illness. Five years of *NJOSH-300 Logs* must be readily available to NJPEOSH inspectors. The second form is the annual summary of work-related injuries, *NJOSH 300A Summary of Work-Related Injuries and Illnesses*. This summary is posted at each work establishment from February through April.

'Work-related' is defined as any event or exposure in the work environment either causing or contributing to the resulting condition, or significantly aggravating a pre-existing injury or illness. 'Work-related' is presumed for injuries and illnesses resulting from events occurring in the work environment, unless an exception given in OSHA 1904.5(b)(2) applies. Recordable work-related injuries and illnesses are those that result in:

- Death or loss of consciousness
- Days away from work, placement on restricted work activity, or a job transfer
- Medical treatment beyond first aid

Public employers must also record the following conditions if they have been determined to be work-related:

- Any needle stick injury or cut from an object that is contaminated with a potentially infectious material
- Any case requiring an employee to be medically removed under an OSHA health (chemical) standard
- A tuberculosis infection as evidenced by a positive skin test or diagnosis by a physician
- An employee's audiogram reveals a specified hearing Standard Threshold Shift in one or both ears

Reporting of Serious Occupational Injuries to NJPEOSH

New Jersey Public Employers must report fatalities to NJPEOSH within eight (8) hours of the occurrence, and report work-related hospitalizations, amputations, or loss of an eye within 24 hours by calling the 24-hour hotline (800) 624-1644 or the 24-hour fax line (609) 292-3749. Refer to the flow chart on page 2.

Links to additional resources

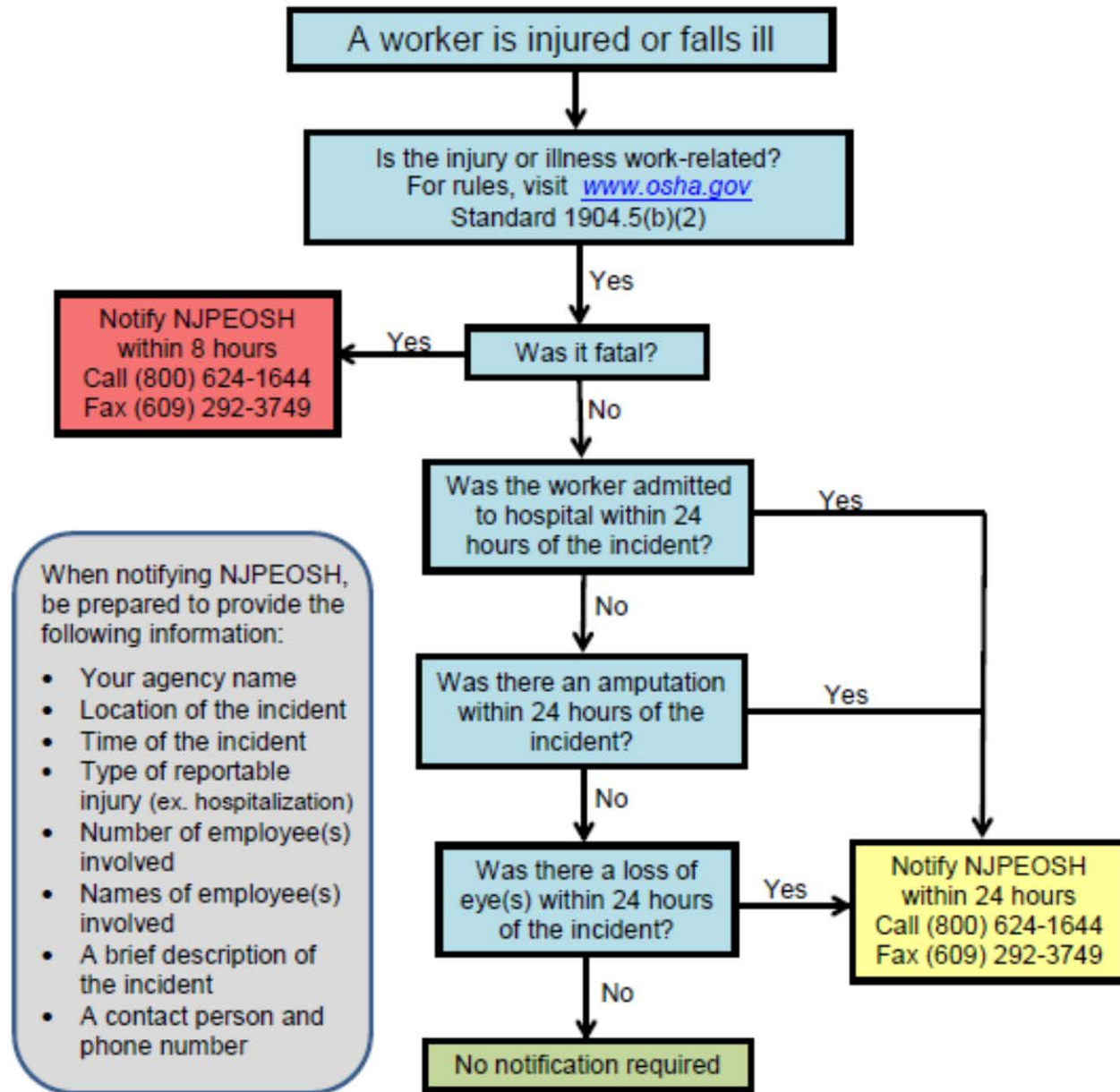
NJPEOSH 16-page guide to Recording and Reporting of Occupational Injuries and Illnesses is available at http://lwd.dol.state.nj.us/labor/forms_pdfs/lse/NJOSH300.pdf

NPEOSH revised their Public Employee Alert #27 to reflect the new reporting regulations. It is available at http://lwd.dol.state.nj.us/labor/forms_pdfs/lse/Alert27.pdf.

Now is also a good time to verify the PEOSH poster is posted. A copy can be downloaded at http://lwd.dol.state.nj.us/labor/forms_pdfs/lse/wps35.pdf

This bulletin is intended for general information purposes only. It should not be construed as legal advice or legal opinion regarding any specific or factual situation. Always follow your organization's policies and procedures as presented by your manager or supervisor. For further information regarding this bulletin, contact your Safety Director at 877.398.3046.

NJPEOSH 2015 Injury Reporting Requirements



Notes:

- OSHA defines amputation as the traumatic loss of a limb or external body part, including a part, such as a limb or appendage, that has been severed, cut off (either completely or partially); fingertip amputations with or without bone loss; medical amputations resulting from irreparable damage; amputations of parts that have been reattached. Amputations do not include avulsions, enucleations, degloving, scalpings, severed ears, or broken or chipped teeth.
- If a motor vehicle accident occurs in a construction work zone, you must report the fatality, in-patient hospitalization, amputation, or loss of an eye. If the motor vehicle accident occurred on a public street or highway, but not in a construction work zone, you do not have to report the fatality, hospitalization, amputation, or loss of an eye.
- A work-related fatality or in-patient hospitalization caused by a heart attack must be reported

Webinar: Will your recordkeeping practices keep PEOSH inspectors from citing you?

PEOSH has been getting tougher on recordkeeping ... As a result, your recordkeeping practices had better be squeaky-clean, or you could run afoul of PEOSH's rules and regulations without even realizing it.

This 16 minute webinar can help ensure your records are correct and your organization is compliant with PEOSH's latest rules, regulations, and record-keeping requirements. In this pre-recorded webinar, we'll cover the very latest information on recordkeeping practices and walk you step by step through PEOSH's detailed forms. You'll learn how to log employee incidents properly, maintain records in accordance with PEOSH's current standards and the timelines for reporting serious injuries.

Attendees can register and view the pre-recorded webinar by clicking on the link below.

https://connerstrong.adobeconnect.com/recordkeeping/event/event_info.html

Attached is a NJ Recordkeeping Overview document for your reference, please print out the NJOSH 300 and 300A forms found on page 14 and 15, both forms will be referenced during the webinar.

QUESTIONS? Contact the JA Montgomery Help Line (877) 398-3046

RESOLUTION NO. 18-17

**MERCER COUNTY INSURANCE FUND COMMISSION
AUTHORIZING A CLOSED SESSION TO DISCUSS
PAYMENT AUTHORIZATION REQUESTS (PARS) & SETTLEMENT (SARS)
RELATED TO PENDING OR ANTICIPATED LITIGATION**

WHEREAS, the MERCER COUNTY INSURANCE FUND COMMISSION (hereinafter “MCIFC”) is duly constituted as an Insurance Commission pursuant to N.J.S.A. 40A:10-6 et seq.; and

WHEREAS, the MCIFC is subject to the requirements of the Open Public Meetings Act, N.J.S.A. 10:4-6 et seq.; and

WHEREAS, the Open Public Meetings Act requires all meetings of public bodies be open to the public; and

WHEREAS, the Open Public Meetings Act further provides a public body may permissibly exclude the public from a portion of a meeting at which the public body discusses items per the Open Public Meetings Act at N.J.S.A. 10:4-12.b.(1) thru (9) recognized as requiring confidentiality; and

WHEREAS, it is necessary and appropriate for the MCIFC to discuss certain matters in a meeting not open to the public consistent with N.J.S.A. 10:4-12.b.(7); and

NOW THEREFORE BE IT RESOLVED by the Commissioners of said MERCER County Insurance Fund Commission pursuant to the Open Public Meetings Act as follows:

The MCIFC shall hold a closed session from which the public shall be excluded on February 27, 2017.

The general nature of the items to be discussed at said closed session shall include the following: the appropriateness of payment of statutorily required workers’ compensation benefits, settlement authority if any or continuing defense of pending or anticipated litigation, discussion of litigation strategy, position the MCIFC will take in said litigation, strengths and weaknesses of MCIFC’s position in said litigation.

The specific litigation is identified by the claim number assigned by Inservco in its capacity as the third-party claims administrator, name of the claimant, date of loss, workers’ compensation petition number and/or court assigned docket number which is set forth in the attached list which list is also appended to the MCIFC monthly meeting agenda for February 27, 2017 which agenda has been timely posted per the Open Public Meetings Act.

The minutes of said closed session shall be made available for disclosure to the public consistent with N.J.S.A. 10:4-13 when the items which are the subject of the closed session discussions are resolved and the reasons for confidentiality as to both the MCIFC and the claimant no longer exist.

ADOPTED by THE MERCER COUNTY INSURANCE FUND COMMISSION at a properly noticed meeting held on February 27, 2017.

ADOPTED:

<hr/>	<hr/>
ANDREW A. MAIR, CHAIRMAN	DATE

ATTEST:

<hr/>	<hr/>
K. MEGAN CLARK HUGHES, VICE CHAIR	DATE

PAYMENT AUTHORIZIATION REQUESTS

<u>Claim #</u>	<u>Claimant</u>	<u>Type of Claim</u>	<u>PAR/SAR</u>
3960001426	Michael Ferraro	Worker Compensation	PAR
3960001158	Michael Fiabane	Worker Compensation	SAR
3960000710	Michelle Kemler	Worker Compensation	SAR
3960000814	Aureo Ortiz	Worker Compensation	SAR

APPENDIX I

**MERCER COUNTY INSURANCE FUND COMMISSION
OPEN MINUTES
MEETING – JANUARY 23, 2017
Mercer County
McDade Administration Building
640 South Broad Street
Trenton, NJ 08650-0068
10:30AM**

Meeting was called to order by Chairman Mair. Ms. Dodd read the Open Public Meetings notice into record.

ROLL CALL OF COMMISSIONERS:

Andrew A. Mair	Present
K. Megan Clark Hughes	Absent
Raissa Walker	Absent
Lillian Nazzaro	Present

FUND PROFESSIONALS PRESENT:

Executive Director	PERMA Risk Management Services Joseph Hrubash
Claims Service	Inservco Insurance Services, Inc. Nancy Fowlkes Matthew Baron Keith Platt
	Conner Strong & Buckelew Danielle Batchelor
Managed Care Services	First MCO Diana Cortes
CEL Underwriting Manager	Conner Strong & Buckelew Ed Cooney
Risk Management Consultant	Borden Perlman Salisbury & Kelly Doug Borden
Attorney	Paul Adezio, Esq.
Treasurer	
Safety Director	J.A. Montgomery Risk Control Glenn Prince

ALSO PRESENT:

Alma Ortiz, Mercer County Improvement Authority
Ana-Eliza T. Bauersachs, Esq., Capehart Scatchard, PA
Susan Schaefer, Susan Schaefer, LLC
Cathy Dodd, PERMA Risk Management Services

APPROVAL OF MINUTES: OPEN & CLOSED MINUTES OF DECEMBER 19, 2016

**MOTION TO APPROVE THE OPEN & CLOSED MINUTES OF
DECEMBER 19, 2016**

Moved:	Chairman Mair
Second:	Commissioner Nazzarro
Vote:	2 Yes, 0 Nays

Chairman Mair advised he had a few comments regarding the minutes. Chairman Mair reported there was a consistent problem with motor vehicle accidents where the repairs were being made before the incidents were reported to Risk Management. Chairman Mair advised he spoke to the new Director of the Motor Pool and he believes this issue should be resolved.

In response to Chairman Mair's inquiry, Ms. Dodd advised the auto insurance cards were sent to Ms. Hughes and she understood Mr. Cruz was distributing the cards. Mr. Cooney advised the auto insurance cards were non specific and read "All Owned or Leased Vehicles". Ms. Dodd noted she would reach out to Mr. Cruz to ensure he had enough cards to distribute.

With regard to the Professional Service Agreements, Chairman Mair advised that most of the problems were resolved by the Conflict Letter from the Executive Director so they were going to proceed very quickly in February.

Chairman Mair stated the Safety Director had minor suggestions for the County Court Houses at 175 Broad Street and 400 Market Street and inquired if those recommendations were implemented. Mr. Prince advised as of now his office did not receive the closure form back yet but would check when he returned to the office.

CORRESPONDENCE: NONE

SAFETY COMMITTEE: Mr. Prince reported the Safety & Accident Review Committee last met on met on December 21st and the next meeting was scheduled for February 15, 2017.

CLAIMS COMMITTEE: Ms. Batchelor reported the Claims Committee met prior to the Commission meeting and there were three PARS to present during closed session.

EXECUTIVE DIRECTOR REPORT: Executive Director reported he would start his report with the Reorganization Resolutions. Executive Director advised he would review the

Reorganization Resolutions and then they could be approved by one motion if the Chairman agreed. Chairman Mair advised that was acceptable.

REORGANIZATION RESOLUTIONS: Executive Director referred to copies of the Reorganization Resolutions which were included in the agenda. Executive Director reviewed the below resolutions with the Commission.

- Resolution 1-17 Appointing MCIFC Commissioners
- Resolution 2-17 Appointing CEL Commissioner
- Resolution 3-17 Appointing Treasurer
- Resolution 4-17 Appointing Commission Attorney
- Resolution 5-17 Designating Authorized Depositories for Fund Assets
- Resolution 6-17 Designating Authorized Signatures for Commission Bank Account
- Resolution 7-17 Designating Custodian of Records
- Resolution 8-17 Designating Official Newspapers
- Resolution 9-17 Establishing Cash Management Plan
- Resolution 10-17 Plan of Risk Management for 2017

In response to Chairman Mair's inquiry, Ms. Dodd advised Ms. Walker was the alternate for the CEL.

Executive Director asked the CEL Underwriting Manager, Ed Cooney, to provide an overview of the Risk Management Plan and discuss any changes that were made.

Mr. Cooney advised the Risk Management Plan was the coverage document for the self insured retention and discusses the coverages that are available. Mr. Cooney reviewed the types of coverage for Mercer. Mr. Cooney advised the \$100,000 property deductible did not change, however the deductible for vacant properties was amended from \$100,000 to \$250,000 due to the growing exposure both in the frequency and severity in that area. Mr. Cooney advised the Risk Management Plan now included pollution coverage which the County purchased as of January 1st. Mr. Cooney noted the CEL Pollution policy was a three year term and was now in the second year of the term. Therefore, Mercer County's charge for the pollution insurance would be pro rated for the two years.

In response to Executive Director's inquiry regarding any unresolved items with the Pollution coverage, Mr. Cooney advised the Pollution coverage was in place however, Underground Storage Tank coverage was a higher risk and he was working with Mr. Borden who was putting together primary coverage and then the Pollution Policy would be excess coverage for the tanks.

Chairman Mair mentioned the County does not know what property they own due to the different titles of ownership. Chairman Mair advised they were cleaning this up and were trying to produce a definitive list. Executive Director reported one of the future objectives of the CEL was to have a data collection system so the client could have their Risk Manager enter information into the system to track information more accurately. Chairman Mair advised he anticipated using their GIS (Geographic Information System) to litigate the title search costs to create an inventory list.

Mr. Borden added that the deductible Mr. Cooney was referring to was the property deductible and not for the liability coverage. Mr. Cooney advised the property coverage was flexible and as long as you were not intentionally omitting property the full limit of the policy was available, however, it was important to know what property you owned. Executive Director noted they were obligated to the insurance company to report replacement value and report all insurable values.

Chairman Mair indicated he wanted to discuss the airport liability coverage that was written elsewhere with Mr. Borden at some point. Mr. Borden advised this was a specialized program with the True Agency.

Executive Director asked if anyone had any questions on the Reorganizations Resolutions and requested a motion for approval.

MOTION TO APPROVE REORGANIZATION RESOLUTIONS 1-17 THROUGH 10-17

Moved:	Chairman Mair
Second:	Commissioner Nazzaro
Vote:	2 Ayes, 0 Nays

2015 AUDIT REPORT AS OF DECEMBER 31, 2015: Executive Director reported at the last meeting Mr. Miles of Bowman & Company, LLP presented a draft copy of the 2015 Audit. Executive Director advised there were no changes to the audit and Ms. Dodd had distributed a final copy of the audit at the start of the meeting. Executive Director asked if anyone had any questions regarding the audit and requested a motion to approve Resolution 11-17, Certificate of Annual Audit Report for Period Ending December 31, 2015.

MOTION TO APPROVE RESOLUTION 11-17 CERTIFICATION OF ANNUAL AUDIT REPORT FOR PERIOD ENDING DECEMBER 31, 2015

Moved:	Chairman Mair
Second:	Commissioner Nazzaro
Vote:	2 Ayes, 0 Nays

2017 MCIFC MEETING DATES: Executive Director referred to a copy of the 2017 MCIFC Meeting schedule which was included in the agenda. Executive Director advised the schedule was presented at the last Commission Meeting. Executive Director requested a motion to adopt Resolution 12-17 if the Commissioners agreed with the meeting schedule. Ms. Dodd advised at the last meeting Ms. Hughes and Ms. Walker advised they did not have any conflict with the proposed meeting dates.

MOTION TO ADOPT RESOLUTION 12-17, FIXING PUBLIC MEETING DATES FOR THE YEAR 2017

Moved:	Chairman Mair
Second:	Commissioner Nazzaro

Vote:

2 Ayes, 0 Nays

EMPLOYEE DISHONESTY COVERAGE RENEWAL: Executive Director reported the Employee Dishonesty Coverage policy with Selective Insurance Company renewed on January 1, 2017. Executive Director advised the policy covered the positions of Executive Director, Third Party Administrator and the Treasurer. Executive Director noted the premium was as expiring, \$2,342 and the cost would be paid out of the miscellaneous and contingency budget line.

MOTION TO APPROVE EXPENDITURE FOR EMPLOYEE DISHONESTY COVERAGE IN THE AMOUNT OF \$2,342

Moved:

Chairman Mair

Second:

Commissioner Nazzaro

Vote:

2 Ayes, 0 Nays

CERTIFICATE OF INSURANCE ISSUANCE REPORT: Executive Director reported there were no requests for any 2016 certificate of insurances for the period of 12/16/16 to 12/31/16. Executive Director advised the 2017 renewal certificates were issued and a summary report would appear in the next agenda.

NJ EXCESS COUNTIES INSURANCE FUND (CELJIF): Executive Director advised the CELJIF scheduled their reorganization meeting for February 23, 2017, 1:00 PM at the Camden County Regional Emergency Center.

MCIFC PROPERTY & CASUALTY FINANCIAL FAST TRACKS: Executive Director advised the November Financial Fast Track was included in the agenda. The Commission had a surplus of \$4,619,404 as of November 30, 2016. Executive Director also referred to line 10 of the report, "Investment in Joint Venture" and indicated \$674,305 of the surplus was the MCIFC's share of the CELJIF equity. Executive Director noted the cash balance was \$697,242.

NJ CEL PROPERTY & CASUALTY FINANCIAL FAST TRACK: Executive Director reported the November Financial Fast Track was included in the agenda. Executive Director advised as of November 30, 2016 the Fund had a surplus of \$7,793,256 and a total cash figure of \$19,997,092. Executive Director asked if anyone had any questions regarding the Financial Fast Tracks.

PROFESSIONAL SERVICE CONTRACTS: Executive Director noted Chairman Mair discussed the Professional Service Contracts earlier.

POTENTIAL NEW MEMBERSHIP: Executive Director reported the Chairman had some preliminary discussions with the Mercer County Vo-Tech and Special Services School Districts about considering membership in the MCIFC effective 7/1/17. Executive Director advised Conner Strong & Bucklew would reach out to the decision makers to see if there was an interest.

Executive Director advised that concluded his report unless anyone had any questions.

Executive Director's Report Made Part of Minutes.

TREASURER REPORT: Chairman Mair advised the Treasurer was not present. Chairman Mair advised the January Bill List, Resolution 13-17, was included in the agenda.

MOTION TO APPROVE RESOLUTION 13-17, JANUARY BILL LIST IN THE AMOUNT OF \$47,787.73

Moved:	Chairman Mair
Second:	Commissioner Nazzaro
Vote:	2 Ayes, 0 Nays

Executive Director advised the monthly Treasurer Reports were included in the agenda.

ATTORNEY: Mr. Adezio advised he did not have anything to report at this time but thanked the Commission for appointing Mr. Sypek as the Commission Attorney.

CLAIMS SERVICE:

Ms. Fowlkes advised she would present the Stewardship Report during Closed Session along with the PARS.

Executive Director advised Resolution 14-17, Disclosure of Liability Claims Check Register, was included in the agenda along with a copy of the check register for the period of January 1, 2017 to January 31, 2017.

MOTION TO APPROVE RESOLUTION 14-17 AUTHORIZING DISCLOSURE OF LIABILITY CLAIMS CHECK REGISTER

Moved:	Chairman Mair
Second:	Commissioner Nazzaro
Vote:	2 Ayes, 0 Nays

MANAGED CARE: Ms. Cortes reported for the month of December provider bills were received in the amount of \$31,792 and First MCO repriced the bills to \$ 14,189 for a savings of \$17,603 or 55%. Ms. Cortes advised the PPO penetration for the month of December was 87%. Ms. Cortes advised that concluded her report unless anyone had any questions.

CEL SAFETY DIRECTOR: Mr. Prince reviewed the December - January Risk Control Activity Report which was included in the agenda. Mr. Prince reported the agenda also included a bulletin on Best Practices for Snow Emergencies and recommended the bulletin be sent out electronically to any employees who handle the snow removal task. Chairman Mair advised he not only sends the information to the employees but also to the Communication Director in the event he wants to turn them into Public Service Announcements. Mr. Prince advised he also had an Accident Investigation Report conducted at the Library and would discuss the report during closed session.

RISK MANAGER CONSULTANT: Mr. Borden advised Mr. Cooney already discussed the pollution policy. Mr. Borden noted he was still working with Mr. Cooney to determine specifically what additional information Zurich needed on the several of the sites. Mr. Borden reported he did review the Risk Management Plan and he typically reviews the plan when the policies are available.

Correspondence Made Part of Minutes.

OLD BUSINESS: None

NEW BUSINESS: In response to Chairman Mair's inquiry, Ms. Dodd advised the Chairman wanted to discuss the inventory of Mercer County's property; however, the subject was discussed earlier.

PUBLIC COMMENT:

MOTION TO OPEN THE MEETING TO THE PUBLIC

Moved:	Chairman Mair
Second:	Commissioner Nazzaro
Vote:	2 Ayes, 0 Nays

Seeing no members of the public wishing to speak Chairman Mair asked for a motion to close the public comment portion of the meeting.

MOTION TO CLOSE MEETING TO THE PUBLIC

Moved:	Chairman Mair
Second:	Commissioner Nazzaro
Vote:	2 Ayes, 0 Nays

CLOSED SESSION: Chairman Mair read and requested a motion to approve Resolution 15-17 authorizing a Closed Session to discuss PARS.

MOTION TO APPROVE RESOLUTION 15-17 FOR EXECUTIVE SESSION

Moved:	Chairman Mair
Second:	Commissioner Nazzaro
Vote:	2 Ayes, 0 Nays

MOTION TO RETURN TO OPEN SESSION

Moved:	Commissioner Hughes
Second:	Chairman Walker
Vote:	2 Ayes, 0 Nays

**MOTION TO AUTHORIZE PAYMENT AUTHORITY/SETTLEMENT
AUTHORITY REQUESTS DISCUSSED IN CLOSED SESSION**

Moved:	Commissioner Hughes
Second:	Chairman Mair
Vote:	2 Ayes, 0 Nays

MOTION TO ADJOURN:

Moved:	Chairman Mair
Second:	Commissioner Hughes
Vote:	2 Ayes, 0 Nays

MEETING ADJOURNED: 11:34 AM

Minutes prepared by:
Cathy Dodd, Assisting Secretary

APPENDIX II

Mercer County Insurance Commission
Certificate of Insurance Monthly Report
From 12/01/2016 to 01/31/2017

Holder Name	Holder Address	Holder Code	Description of Operations	Issue Date	Coverages	Insured Name	Insured Address	Description of Operations (continued)
New Jersey Council on the Arts	PO Box 306 Trenton, NJ 08625-0306	541	Evidence of Insurance. All operations usual to County Governmental entity as respects to the Local Arts Program Grant. (see page 2) A3D	12/22/2016	GL EX AU WC	County of Mercer	McDade Administration Building 640 South Broad Street, PO Box 8068 Trenton, NJ 08650-0068	Company D: XS Liability \$10,000,000 XS of \$10,000,000, (\$10,000,000 Annual Aggregate) Policy Term: 1/1/17 to 1/1/18 Policy # XCO0000261 Company E: XS Worker Compensation Sta
State of New Jersey - Dept of Human Services	Div of Family Development PO Box 716 Trenton, NJ 08625-0716	609	Evidence of Insurance in respects to the Social Services to the Homeless Grant. (see page 2) A3D	12/22/2016	GL EX AU WC	County of Mercer	McDade Administration Building 640 South Broad Street, PO Box 8068 Trenton, NJ 08650-0068	Company D: XS Liability \$10,000,000 XS of \$10,000,000, (\$10,000,000 Annual Aggregate) Policy Term: 1/1/17 to 1/1/18 Policy # XCO0000261 Company E: XS Worker Compensation Statutory x \$1,000,000 XS Emp
NJ Transit	Local Programs and Minibus Support One Penn Plaza East Newark, NJ 07105-2246	927	Certificate holder is additional insured where obligated by virtue of a written contract or written mutual aid agreement or other written agreement with the Named Assured, but only in respect to acts or operations by or on behalf of the Named Assured, and	12/13/2016	AU EX PHYS	County of Mercer	McDade Administration Building 640 South Broad Street, PO Box 8068 Trenton, NJ 08650-0068	<div><div></div><div>NJT # V.I.N. # 16-1449 1FDFE4FS9BDB00570 16-1450 1FDFE4FS0BDB00571 16-1491 1FDFE4FS6DDA62881 16-1492 1FDFE4FS8DDA62882 16-1524 1FDFE4FS5DDB09799 16-1525 1FDFE4FS8DDB09800 16-1526 1FDFE4FSXDDB09801 16-1555 1FDFE4FSXDDB</div></div>
Brandolini Property Management &	BLF Partners, LLC 1301 Lancaster Avenue Berwyn, PA 19312	996	Evidence of insurance. All operations usual to County Governmental Entity as respects to the lease of the Mercer County Connections Office. A3D	12/22/2016	PR	County of Mercer	McDade Administration Building 640 South Broad Street, PO Box 8068 Trenton, NJ 08650-0068	as respects to the lease of the Mercer County Connections Office. A3D
Brandolini Property Management &	BLF Partners, LLC 1301 Lancaster Avenue Berwyn, PA 19312	996	Certificate holder is additional insured where obligated by virtue of a written contract or written mutual aid agreement or other written agreement with the Named Assured, but only in respect to acts or operations by or on behalf of the Named Assured, and	12/22/2016	GL EX AU WC	County of Mercer	McDade Administration Building 640 South Broad Street, PO Box 8068 Trenton, NJ 08650-0068	Company D: XS Liability \$10,000,000 XS of \$10,000,000, (\$10,000,000 Annual Aggregate) Policy Term: 1/1/17 to 1/1/18
East Windsor Regional School District	25A Leshin Lane Hightstown, NJ 08520	1010	Evidence of insurance as respects polling at the following locations: 10, 11 Ethel McKnight School, 58 Twin Rivers Drive South; 7, 13, 14 Melvin Kreps School, 5 Kent Drive; 12, 15, 16 Perry Drew School, 70 Twin Rivers Drive North - MultiPurpose Room A3D	12/22/2016	GL EX	County of Mercer	McDade Administration Building 640 South Broad Street, PO Box 8068 Trenton, NJ 08650-0068	as respects to the following polling locations.
Hamilton Twp. Board of Education	90 Park Ave Trenton, NJ 08690	1014	Certificate holder is additional insured where obligated by virtue of a written contract or written mutual aid agreement or other written agreement with the Named Assured, but only in respect to acts or operations by or on behalf of the Named Assured, and	12/22/2016	GL EX AU WC	County of Mercer	McDade Administration Building 640 South Broad Street, PO Box 8068 Trenton, NJ 08650-0068	1, 33 Mercerville Elementary School Lobby, 60 Regina Avenue 16, 41 Nottingham High School, Hamilton & Klockner Avenues 22 Robinson Elementary School, 495
Hopewell Township	201 Washington Crossing - Pennington Road Titusville, NJ 08560	1015	Evidence of insurance. All operations usual to County Governmental Entity as respects for events being held at the Equestrian Center in Hopewell Twp. (See page 2) A3D	12/22/2016	GL EX AU WC	County of Mercer	McDade Administration Building 640 South Broad Street, PO Box 8068 Trenton, NJ 08650-0068	Company D: XS Liability \$10,000,000 XS of \$10,000,000, (\$10,000,000 Annual Aggregate) Policy Term: 1/1/17 to 1/1/18 Policy # XCO0000546 Company E: XS Worker Compensation Stat
NJ Division of Disability Services	11 A Quakerbridge Rd.; PO Box 705 Trenton, NJ 08625	1024	Evidence of Insurance. All operations usual to County Governmental Entity as respects to State funding. (see page 2) A3D	12/22/2016	GL EX AU WC	County of Mercer	McDade Administration Building 640 South Broad Street, PO Box 8068 Trenton, NJ 08650-0068	Company D: XS Liability \$10,000,000 XS of \$10,000,000, (\$10,000,000 Annual Aggregate) Policy Term: 1/1/17 to 1/1/18 Policy # XCO0000546 Company E: XS Worker Compensation Statutory x \$1,000,00

Mercer County Insurance Commission
Certificate of Insurance Monthly Report
From 12/01/2016 to 01/31/2017

Holder Name	Holder Address	Holder Code	Description of Operations	Issue Date	Coverages	Insured Name	Insured Address	Description of Operations (continued)
State of New Jersey, Dept. of Environmental Protection	Compliance and Enforcement Bureau of Local Environmental Management Mail Code 401-04N, P.O. Box 420 Trenton, NJ 08625-0420	1056	Evidence of insurance. All operations usual to County Governmental Entity. (SEE PAGE 2) A3D	12/22/2016	GL EX AU WC	County of Mercer	McDade Administration Building 640 South Broad Street, PO Box 8068 Trenton, NJ 08650-0068	Company D: XS Liability \$10,000,000 XS of \$10,000,000, (\$10,000,000 Annual Aggregate) Policy Term: 1/1/17 to 1/1/18 Policy # XCO0000564 Company E: XS Worker Compensation Statutory x \$1,000,000 XS Em
Evidence of Insurance		1060	Evidence of Insurance. All operations usual to County Governmental Entity. A3D	12/30/2016	AU EX PHYS	County of Mercer	McDade Administration Building 640 South Broad Street, PO Box 8068 Trenton, NJ 08650-0068	Company D: XS Liability \$10,000,000 XS of \$10,000,000, (\$10,000,000 Annual Aggregate) <input type="checkbox"/> Policy Term: 1/1/17 to 1/1/18 Policy # XCO0000546 Company E: XS Worker Compensation Statutory x \$1,000,000 X
Project Freedom @ Hamilton	715 Kuser Road Hamilton, NJ 08619	1070	Evidence of insurance. All operations usual to County Governmental Entity as respects Hamilton Districts 6 and 13. (SEE PAGE 2)	12/22/2016	GL EX AU WC	County of Mercer	McDade Administration Building 640 South Broad Street, PO Box 8068 Trenton, NJ 08650-0068	Company D: XS Liability \$10,000,000 XS of \$10,000,000, (\$10,000,000 Annual Aggregate) <input type="checkbox"/> Policy Term: 1/1/17 to 1/1/18 Policy # XCO0000546 Company E: XS Worker Compensation Statutory x \$1,000,000 X
Lawrence Township	2207 Lawrenceville Road Lawrenceville, NJ 08648	1074	Evidence of insurance. All operations usual to County Governmental Entity. (SEE PAGE 2) A3D	12/22/2016	GL EX AU WC	County of Mercer	McDade Administration Building 640 South Broad Street, PO Box 8068 Trenton, NJ 08650-0068	Company D: XS Liability \$10,000,000 XS of \$10,000,000, (\$10,000,000 Annual Aggregate) <input type="checkbox"/> Policy Term: 1/1/17 to 1/1/18 Policy # XCO0000546 Company E: XS Worker Compensation Statutory x \$1,000,000
Joint Base	McGuire-Dix-Lakehurst JBMDL, NJ 08641	1077	Certificate holder is additional insured where obligated by virtue of a written contract or written mutual aid agreement or other written agreement with the Named Assured, but only in respect to acts or operations by or on behalf of the Named Assured, and	12/22/2016	GL EX AU WC	County of Mercer	McDade Administration Building 640 South Broad Street, PO Box 8068 Trenton, NJ 08650-0068	as respects use of facilities for Police Academy Training. Company D: XS Liability \$10,000,000 XS of \$10,000,000, (\$10,000,000 Annual Aggregate) Policy Term: 1/1/17 to 1/1/18 Policy # XCO0000546 Company E: XS Worker Compensation S
Joint Base	McGuire-Dix-Lakehurst JBMDL, NJ 08641	1077	Certificate holder is additional insured where obligated by virtue of a written contract or written mutual aid agreement or other written agreement with the Named Assured, but only in respect to acts or operations by or on behalf of the Named Assured, and	12/22/2016	GL EX AU WC	County of Mercer	McDade Administration Building 640 South Broad Street, PO Box 8068 Trenton, NJ 08650-0068	as respects use of facilities for Police Academy Training. Company D: XS Liability \$10,000,000 XS of \$10,000,000, (\$10,000,000 Annual Aggregate) Policy Term: 1/1/17 to 1/1/18 Policy # XCO0000546 Company E: XS Worker Compensation S
Ravine Club	100 E. State Police Drive Ewing, NJ 08628	1078	Evidence of insurance. All operations usual to County Governmental Entity as respects to the use of the club by the 4-H Club Hot Shots Shooting Sports. (SEE PAGE 2) A3D	12/22/2016	GL EX AU WC	County of Mercer	McDade Administration Building 640 South Broad Street, PO Box 8068 Trenton, NJ 08650-0068	Company D: XS Liability \$10,000,000 XS of \$10,000,000, (\$10,000,000 Annual Aggregate) <input type="checkbox"/> Policy Term: 1/1/17 to 1/1/18 Policy # XCO0000546 Company E: XS Worker Compensation Statutory x \$1,000,
Trenton Board of Education	108 North Clinton Avenue Trenton NJ 08609	1099	Evidence of insurance. All operations usual to County Governmental Entity as respects (SEE PAGE 2) A3D	12/22/2016	GL EX AU WC	County of Mercer	McDade Administration Building 640 South Broad Street, PO Box 8068 Trenton, NJ 08650-0068	N-5 Columbus School, 100 Brunswick Avenue S-3,S-7,S-8 Grace Dunn School, Dayton Street W-8 Gregory School, 500 Rutherford Avenue E-4, E-6 Hedgepeth Williams School, South Olden Avenue Entrance W-3,W-7 Joyce Kilmer School, 1300 Stuyvesant Ave, Door #1 Company D: XS Liability \$10,000,000 XS of \$10,000,000, (\$10,000,000 Annual Aggregate) <input type="checkbox"/> Policy Term: 1/1/17 to 1/1/18 Policy # XCO0000546 Company E: XS Worker Compensation Statutory x \$1,000,000 X
SRI International	201 Washington Road Princeton, NJ 08540	1100	Evidence of insurance. All operations usual to County Governmental Entity. A3D	12/22/2016	GL EX AU WC	County of Mercer	McDade Administration Building 640 South Broad Street, PO Box 8068 Trenton, NJ 08650-0068	Company D: XS Liability \$10,000,000 XS of \$10,000,000, (\$10,000,000 Annual Aggregate) <input type="checkbox"/> Policy Term: 1/1/17 to 1/1/18 Policy # XCO0000546 Company E: XS Worker Compensation Statutory x \$1,000,000 X
Project Freedom @ Lawrence	1 Freedom Boulevard Lawrenceville, NJ 08648	1102	Evidence of insurance. All operations usual to County Governmental Entity as respects Lawrence District 6. (SEE PAGE 2) A3D	12/22/2016	GL EX AU WC	County of Mercer	McDade Administration Building 640 South Broad Street, PO Box 8068 Trenton, NJ 08650-0068	Company D: XS Liability \$10,000,000 XS of \$10,000,000, (\$10,000,000 Annual Aggregate) <input type="checkbox"/> Policy Term: 1/1/17 to 1/1/18 Policy # XCO0000546 Company E: XS Worker Compensation Statutory x \$1,000,000 X

Mercer County Insurance Commission
Certificate of Insurance Monthly Report
From 12/01/2016 to 01/31/2017

Holder Name	Holder Address	Holder Code	Description of Operations	Issue Date	Coverages	Insured Name	Insured Address	Description of Operations (continued)
								to lease of office space at Airport Corporate Center, 340 Scotch Road, Trenton, NJ 08628. Lease term: June 1, 2014-June 30, 2017 A3D
Szeles Real Estate Development	2045 Park Drive, Suite 102 Harrisburg, PA 17110	1107	Certificate holder is additional insured where obligated by virtue of a written contract or written mutual aid agreement or other written agreement with the Named Assured, but only in respect to acts or operations by or on behalf of the Named Assured, and	12/22/2016	GL EX AU WC	County of Mercer	McDade Administration Building 640 South Broad Street, PO Box 8068 Trenton, NJ 08650-0068	Company D: XS Liability \$10,000,000 XS of \$10,000,000, (\$10,000,000 Annual Aggregate) <input type="checkbox"/>
Szeles Real Estate Development	2045 Park Drive, Suite 102 Harrisburg, PA 17110	1107	Certificate holder is additional insured where obligated by virtue of a written contract or written mutual aid agreement or other written agreement with the Named Assured, but only in respect to acts or operations by or on behalf of the Named Assured, and	1/4/2017	GL EX AU WC	County of Mercer	McDade Administration Building 640 South Broad Street, PO Box 8068 Trenton, NJ 08650-0068	to lease of office space at Airport Corporate Center, 340 Scotch Road, Trenton, NJ 08628. Company D: XS Liability \$10,000,000 XS of \$10,000,000, (\$10,000,000 Annual Aggregate) <input type="checkbox"/> Policy Term: 1/1/17 to 1/1/18 Policy #
NJ Transit	Local Programs & Minibus Support, 4th Floor One Penn Plaza East Newark, NJ 07105	1128	Certificate holder is additional insured where obligated by virtue of a written contract or written mutual aid agreement or other written agreement with the Named Assured, but only in respect to acts or operations by or on behalf of the Named Assured, and	12/13/2016	AU EX PHYS	County of Mercer	McDade Administration Building 640 South Broad Street, PO Box 8068 Trenton, NJ 08650-0068	respects to the following grant funded vehicle: VIN#1FDFE4FS9EDA13532/Vehicle #16-1683 for use by TRADE.
New Jersey Junior Breeder's Fund, Inc.	New Jersey Department of Agriculture P.O. Box 330 Trenton, NJ 08625	1204	Evidence of insurance. All operations usual to County Governmental Entity. (PAGE 2) A3D	12/22/2016	GL EX AU WC	County of Mercer	McDade Administration Building 640 South Broad Street, PO Box 8068 Trenton, NJ 08650-0068	Company D: XS Liability \$10,000,000 XS of \$10,000,000, (\$10,000,000 Annual Aggregate) <input type="checkbox"/> Policy Term: 1/1/17 to 1/1/18 Policy # XCO0000546 Company E: XS Worker Compensation Statutory x \$1,000,000
Hopewell Township	201 Washington Crossing-Pennington Road Titusville, NJ 08560	1233	Evidence of insurance. All operations usual to County Governmental Entity. (see page 2) A3D	12/22/2016	GL EX AU WC	County of Mercer	McDade Administration Building 640 South Broad Street, PO Box 8068 Trenton, NJ 08650-0068	Company D: XS Liability \$10,000,000 XS of \$10,000,000, (\$10,000,000 Annual Aggregate) <input type="checkbox"/> Policy Term: 1/1/17 to 1/1/18 Policy # XCO0000546 Company E: XS Worker Compensation Sta
NJ Transit	Local Programs & Minibus Support One Penn Plaza East, 4th Floor Newark, NJ 07105-2246	1249	Certificate holder is additional insured and loss payee where obligated by virtue of a written contract or written mutual aid agreement or other written agreement with the Named Assured, but only in respect to acts or operations by or on behalf of the Nam	12/13/2016	AU EX PHYS	County of Mercer	McDade Administration Building 640 South Broad Street, PO Box 8068 Trenton, NJ 08650-0068	regarding vehicle# 16-1659, Vin# 57WMD1A69EM100513, 2014 Mobility Ventures, LLC – MV-1 SE, Grant Year: FY'11 CMAQ FLEX 5310, Seating Capacity 3 + 1
NJ Transit	Local Programs & Minibus Support One Penn Plaza East, 4th Floor Newark, NJ 07105-2246	1249	Certificate holder is additional insured and loss payee where obligated by virtue of a written contract or written mutual aid agreement or other written agreement with the Named Assured, but only in respect to acts or operations by or on behalf of the Nam	12/13/2016	AU EX PHYS	County of Mercer	McDade Administration Building 640 South Broad Street, PO Box 8068 Trenton, NJ 08650-0068	regarding vehicle# 16-1659, Vin# 57WMD1A69EM100513, 2014 Mobility Ventures, LLC – MV-1 SE, Grant Year: FY'11 CMAQ FLEX 5310, Seating Capacity 3 + 1
NJ Transit	Local Programs/Community Mobility 4th Floor, One Penn Plaza East, Newark NJ 07105	1265	Certificate holder is additional insured and loss payee where obligated by virtue of a written contract or written mutual aid agreement or other written agreement with the Named Assured, but only in respect to acts or operations by or on behalf of the N	12/13/2016	AU EX PHYS	County of Mercer	McDade Administration Building 640 South Broad Street, PO Box 8068 Trenton, NJ 08650-0068	with respects to the following grant funded vehicle: VIN#57WMD1A67EM101224/Vehicle #1709.
Township of West Windsor	271 Clarksville Road Princeton, NJ 08550	1275	Evidence of insurance. All operations usual to County Governmental Entity. (SEE PAGE 2) A3D	12/22/2016	GL EX AU WC	County of Mercer	McDade Administration Building 640 South Broad Street, PO Box 8068 Trenton, NJ 08650-0068	Company D: XS Liability \$10,000,000 XS of \$10,000,000, (\$10,000,000 Annual Aggregate) <input type="checkbox"/> Policy Term: 1/1/17 to 1/1/18 Policy # XCO0000546 Company E: XS Worker Compensation Statutory x \$1,000,000 X
Princeton University	c/o Risk Management Department 701 Carnegie Center, Suite 439 Princeton, NJ 08540	1277	Evidence of insurance. All operations usual to County Governmental Entity as respects a radio tower license. (See page 2) A3D	12/22/2016	GL EX AU WC	County of Mercer	McDade Administration Building 640 South Broad Street, PO Box 8068 Trenton, NJ 08650-0068	Company D: XS Liability \$10,000,000 XS of \$10,000,000, (\$10,000,000 Annual Aggregate) <input type="checkbox"/> Policy Term: 1/1/17 to 1/1/18 Policy # XCO0000546 Company E: XS Worker Compensation Sta

Mercer County Insurance Commission
Certificate of Insurance Monthly Report
From 12/01/2016 to 01/31/2017

Holder Name	Holder Address	Holder Code	Description of Operations	Issue Date	Coverages	Insured Name	Insured Address	Description of Operations (continued)
New Jersey State Council on The Arts	PO Box 305 225 West State Street Trenton, NJ 08625-0305	1322	Evidence of insurance. All operations usual to County Governmental Entity as respects to the Local Arts Re-grant Program administers mini grants to non-profit arts organizations. A3D	12/22/2016	GL EX AU WC	County of Mercer	McDade Administration Building 640 South Broad Street, PO Box 8068 Trenton, NJ 08650-0068	Company D: XS Liability \$10,000,000 XS of \$10,000,000, (\$10,000,000 Annual Aggregate) <input type="checkbox"/> XCO0000546 Policy Term: 1/1/17 to 1/1/18 Policy # Company E: XS Worker Compensation St
State of New Jersey	Department of Children & Families Central Business Office 50 East State Street, 3rd Floor, P.O. Box 717 Trenton, NJ 08625-0717	1325	Evidence of insurance. All operations usual to County Governmental Entity. (see page 2) A3D	12/22/2016	GL EX AU WC	County of Mercer	McDade Administration Building 640 South Broad Street, PO Box 8068 Trenton, NJ 08650-0068	Company D: XS Liability \$10,000,000 XS of \$10,000,000, (\$10,000,000 Annual Aggregate) Policy Term: 1/1/17 to 1/1/18 Policy # XCO0000546 Company E: XS Worker Compensation Statutory x \$1,000,000 XS Employers Liab
Evidence of Insurance		1332	Evidence of insurance with regard to 1609 North Olden Avenue, Trenton, NJ (Transfer Station) Building Value \$1,074,340, Contents Value, \$1,745,803	12/22/2016	PR	Mercer County Improvement Authority	80 Hamilton Avenue, 2nd Floor Trenton, NJ 08611	9 Alexander Elementary School, 20 Robert Frost Drive 22 Robinson Elementary School, 495 Gropp Avenue 30, 45 Crockett Middle School, 2631 Kuser Road 20, 40 Sayen Elementary School, 3333 Nottingham Way 46, 64 Grice Middle School, 901 Whitehorse-Ham Company D: XS Liability \$10,000,000 XS of \$10,000,000, (\$10,000,000 Annual Aggregate) <input type="checkbox"/> Policy Term: 1/1/17 to 1/1/18 Policy # XCO0000546 Company E: XS Worker Compensation Statutory x \$1,000,000 X
Hamilton Township Board of Education	90 Park Avenue Hamilton, NJ 08690	1339	Evidence of insurance. All operations usual to County Governmental Entity as respects use of facilities. (see page 2) A3D	12/22/2016	GL EX AU WC	County of Mercer	McDade Administration Building 640 South Broad Street, PO Box 8068 Trenton, NJ 08650-0068	with respects to the SFY 2017 NJ-JARC 3 Grant Program. Company D: XS Liability \$10,000,000 XS of \$10,000,000, (\$10,000,000 Annual Aggregate) Policy Term: 1/1/17 to 1/1/18 Policy # XCO0000261 Company E: XS Worker Compensation
R. Berman Development Co., Inc.	Renewing Green, LLC Windosr Corporate Park, Building 100, Ste 140 50 Millstone Road East Windsor, New Jersey 08520	1349	Evidence of insurance. All operations usual to County Governmental Entity. (SEE PAGE 2) A3D	12/22/2016	GL EX AU WC	Mercer County Improvement Authority	80 Hamilton Avenue, 2nd Floor Trenton, NJ 08611	with respects to the SFY 2017 NJ-JARC 3 Grant Program. Company E: XS Worker Compensation Statutory x \$1,000,000 XS Employers Liability \$5,000,000 x \$1,000,000 <input type="checkbox"/> Policy Term 1/1/17 to
NJ Transit	4th Floor, One Penn Plaza East Newark, NJ 07105	1411	NJ Transit and the State of NJ are additional insureds where obligated by virtue of a written contract or written mutual aid agreement or other written agreement with the Named Assured, but only in respect to acts or operations by or on behalf of the Name	12/13/2016	GL EX AU WC	County of Mercer	McDade Administration Building 640 South Broad Street, PO Box 8068 Trenton, NJ 08650-0068	Company D: XS Liability \$10,000,000 XS of \$10,000,000, (\$10,000,000 Annual Aggregate) <input type="checkbox"/> XCO0000546 Policy Term: 1/1/17 to 1/1/18 Policy # Company E: XS Worker Compensation Statutory x \$
NJ Transit	4th Floor, One Penn Plaza East Newark, NJ 07105	1411	NJ Transit and the State of NJ are additional insureds where obligated by virtue of a written contract or written mutual aid agreement or other written agreement with the Named Assured, but only in respect to acts or operations by or on behalf of the Name	12/13/2016	GL EX AU WC	County of Mercer	McDade Administration Building 640 South Broad Street, PO Box 8068 Trenton, NJ 08650-0068	Company D: XS Liability \$10,000,000 XS of \$10,000,000, (\$10,000,000 Annual Aggregate) <input type="checkbox"/> Policy Term: 1/1/17 to 1/1/18 Policy # XCO0000546 Company E: XS Worker Compensation Statutory x \$1,000,000 X
The State of New Jersey	Central Business and Family Office 50 East State Street, 3rd Floor, PO Box 717 Trenton, NJ 08625-0717	1428	Evidence of insurance. All operations usual to a County Government Entity. (see page 2) A3D	12/22/2016	GL EX AU WC	County of Mercer	McDade Administration Building 640 South Broad Street, PO Box 8068 Trenton, NJ 08650-0068	Company D: XS Liability \$10,000,000 XS of \$10,000,000, (\$10,000,000 Annual Aggregate) <input type="checkbox"/> Policy Term: 1/1/17 to 1/1/18 Policy # XCO0000546 Company E: XS Worker Compensation Statutory x \$
Robbinsville Board of Education	155 Robbinsville Edinburgh Road Robbinsville, NJ 08691	1459	Evidence of insurance. All operations usual to County Governmental Entity as respects Robb Districts 1, 8 - Robbinsville High School, 155 Robbinsville-Edinburgh Rd, Robbinsville and Robb District 7 - Pond Road Middle School, 150 Pond Road, Robbinsville	12/22/2016	GL EX AU WC	County of Mercer	McDade Administration Building 640 South Broad Street, PO Box 8068 Trenton, NJ 08650-0068	Company D: XS Liability \$10,000,000 XS of \$10,000,000, (\$10,000,000 Annual Aggregate) <input type="checkbox"/> Policy Term: 1/1/17 to 1/1/18 Policy # XCO0000546 Company E: XS Worker Compensation Statutory x \$1,000,000 X
Freedom of Information Act	212 W Rt. 38 #700 Moorestown, NJ, 08057	1462	Evidence of insurance. All operations usual to County Governmental Entity. (SEE PAGE 2) A3D	12/22/2016	GL EX AU WC	County of Mercer	McDade Administration Building 640 South Broad Street, PO Box 8068 Trenton, NJ 08650-0068	Company D: XS Liability \$10,000,000 XS of \$10,000,000, (\$10,000,000 Annual Aggregate) <input type="checkbox"/> Policy Term: 1/1/17 to 1/1/18 Policy # XCO0000546 Company E: XS Worker Compensation Statutory x \$1,000,000

Mercer County Insurance Commission
Certificate of Insurance Monthly Report
From 12/01/2016 to 01/31/2017

Holder Name	Holder Address	Holder Code	Description of Operations	Issue Date	Coverages	Insured Name	Insured Address	Description of Operations (continued)
The College of New Jersey	Guest Conference Management P.O. Box 718 Ewing, NJ 08628-0718	1464	Evidence of insurance. All operations usual to County Governmental Entity. (SEE PAGE 2) A3D	12/22/2016	GL EX AU WC	County of Mercer	McDade Administration Building 640 South Broad Street, PO Box 8068 Trenton, NJ 08650-0068	Company D: XS Liability \$10,000,000 XS of \$10,000,000, (\$10,000,000 Annual Aggregate) <input type="checkbox"/> Policy Term: 1/1/17 to 1/1/18 Policy # XCO0000546 Company E: XS Worker Compensation Statutory x \$1,000,000 X
Department of Human Services	Division of Mental Health and Addiction Services 222 South Warren Street, PO Box 700 Trenton, NJ 08625-0700	1466	Evidence of Insurance. All operations usual to County Governmental Entity. (see page 2) A3D	12/22/2016	GL EX AU WC	County of Mercer	McDade Administration Building 640 South Broad Street, PO Box 8068 Trenton, NJ 08650-0068	Company D: XS Liability \$10,000,000 XS of \$10,000,000, (\$10,000,000 Annual Aggregate) <input type="checkbox"/> Policy Term: 1/1/17 to 1/1/18 Policy # XCO0000546 Company E: XS Worker Compensation Statutory x \$1,000,000
Princeton Academy of the Sacred Heart	1128 The Great Road Princeton, NJ 08540	1478	Evidence of insurance. All operations usual to County Governmental Entity. (SEE PAGE 2) A3D	12/22/2016	GL EX AU WC	County of Mercer	McDade Administration Building 640 South Broad Street, PO Box 8068 Trenton, NJ 08650-0068	Company D: XS Liability \$10,000,000 XS of \$10,000,000, (\$10,000,000 Annual Aggregate) <input type="checkbox"/> Policy Term: 1/1/17 to 1/1/18 Policy # XCO0000546 Company E: XS Worker Compensation Sta
The Hun School	176 Edgerstoune Road Princeton, NJ 08540	1479	Evidence of insurance. All operations usual to County Governmental Entity. (SEE PAGE 2) A3D	12/22/2016	GL EX AU WC	County of Mercer	McDade Administration Building 640 South Broad Street, PO Box 8068 Trenton, NJ 08650-0068	Company D: XS Liability \$10,000,000 XS of \$10,000,000, (\$10,000,000 Annual Aggregate) <input type="checkbox"/> Policy Term: 1/1/17 to 1/1/18 Policy # XCO0000546 Company E: XS Worker Compensation Stat
Princeton Board of Education	25 Valley Road Princeton, NJ 08540	1480	Evidence of insurance. All operations usual to County Governmental Entity. (see page 2) A3D	12/22/2016	GL EX AU WC	County of Mercer	McDade Administration Building 640 South Broad Street, PO Box 8068 Trenton, NJ 08650-0068	Company D: XS Liability \$10,000,000 XS of \$10,000,000, (\$10,000,000 Annual Aggregate) <input type="checkbox"/> Policy Term: 1/1/17 to 1/1/18 Policy # XCO0000546 Company E: XS Worker Compensation Stat
Princeton United Methodist Church	7 Vandeventer Street Princeton, NJ 08542	1481	Evidence of insurance. All operations usual to County Governmental Entity. (see page 2) A3D	12/22/2016	GL EX AU WC	County of Mercer	McDade Administration Building 640 South Broad Street, PO Box 8068 Trenton, NJ 08650-0068	Company D: XS Liability \$10,000,000 XS of \$10,000,000, (\$10,000,000 Annual Aggregate) <input type="checkbox"/> Policy Term: 1/1/17 to 1/1/18 Policy # XCO0000546 Company E: XS Worker Compensation Sta
Beneficial Mutual Savings Bank	530 Walnut Street Philadelphia, PA 19106	1558	Certificate holder is additional insured where obligated by virtue of a written contract or written mutual aid agreement or other written agreement with the Named Assured, but only in respect to acts or operations by or on behalf of the Named Assured, and	12/22/2016	GL EX AU WC	County of Mercer	McDade Administration Building 640 South Broad Street, PO Box 8068 Trenton, NJ 08650-0068	with respects to the lease of the Mercer County Connections Office. A3D Company D: XS Liability \$10,000,000 XS of \$10,000,000, (\$10,000,000 Annual Aggregate) <input type="checkbox"/> Policy Term: 1/1/17 to 1/1/18 Policy # XCO0000546 Compa
Beneficial Mutual Savings Bank	530 Walnut Street Philadelphia, PA 19106	1559	Evidence of insurance. All operations usual to County Governmental Entity as respects to the lease of the Mercer County Connections Office. A3D	12/22/2016	PR	County of Mercer	McDade Administration Building 640 South Broad Street, PO Box 8068 Trenton, NJ 08650-0068	Company D: XS Liability \$10,000,000 XS of \$10,000,000, (\$10,000,000 Annual Aggregate) <input type="checkbox"/> Policy Term: 1/1/17 to 1/1/18 Policy # XCO0000546
Beneficial Mutual Savings Bank	530 Walnut Street Philadelphia, PA 19106	1559	Evidence of insurance. All operations usual to County Governmental Entity as respects to the lease of the Mercer County Connections Office. (SEE PAGE 2) A3D	12/22/2016	GL EX AU WC	County of Mercer	McDade Administration Building 640 South Broad Street, PO Box 8068 Trenton, NJ 08650-0068	Company D: XS Liability \$10,000,000 XS of \$10,000,000, (\$10,000,000 Annual Aggregate) <input type="checkbox"/> Policy Term: 1/1/17 to 1/1/18 Policy # XCO0000702 Company E: XS Worker Compensation Statutory x \$1,000,000
Beneficial Mutual Savings Bank	530 Walnut Street Philadelphia, PA 19106	1559	Evidence of insurance. All operations usual to County Governmental Entity. A3D	1/19/2017	GL EX AU WC	County of Mercer	McDade Administration Building 640 South Broad Street, PO Box 8068 Trenton, NJ 08650-0068	Company E: XS Worker Compensation Statutory x \$1,000,000 XS Employers Liabilit

Mercer County Insurance Commission
Certificate of Insurance Monthly Report
From 12/01/2016 to 01/31/2017

Holder Name	Holder Address	Holder Code	Description of Operations	Issue Date	Coverages	Insured Name	Insured Address	Description of Operations (continued)
New Jersey Historical Commission	P.O. Box 305 Trenton, NJ 08625-0305	1600	Evidence of insurance. All operations usual to County Governmental Entity as respects to the re-grant program which administers mini grants to non-profit historical organizations. (SEE PAGE 2) A3D	12/22/2016	GL EX AU WC	County of Mercer	McDade Administration Building 640 South Broad Street, PO Box 8068 Trenton, NJ 08650-0068	Company D: XS Liability \$10,000,000 XS of \$10,000,000, (\$10,000,000 Annual Aggregate) Policy Term: 1/1/17 to 1/1/18 Policy # XCO0000546 Company E: XS Worker Compensation Statutory x \$1,000,000 XS Emp
Colliers Mills Wildlife Management Area	N. Stump Tavern Rd Jackson, NJ, 08527	1670	Evidence of insurance. All operations usual to County Governmental Entity. (see page 2) A3D	12/22/2016	GL EX AU WC	County of Mercer	McDade Administration Building 640 South Broad Street, PO Box 8068 Trenton, NJ 08650-0068	Company D: XS Liability \$10,000,000 XS of \$10,000,000, (\$10,000,000 Annual Aggregate) <input type="checkbox"/> Policy Term: 1/1/17 to 1/1/18 Policy # XCO0000546 Company E: XS Worker Compensation Statutory x \$1,000,000
Princeton Charter School	100 Bunn Drive Princeton, NJ 08540	1673	Evidence of insurance. All operations usual to County Governmental Entity. (see page 2) A3D	12/22/2016	GL EX AU WC	County of Mercer	McDade Administration Building 640 South Broad Street, PO Box 8068 Trenton, NJ 08650-0068	Company D: XS Liability \$10,000,000 XS of \$10,000,000, (\$10,000,000 Annual Aggregate) <input type="checkbox"/> Policy Term: 1/1/17 to 1/1/18 Policy # XCO0000546 Company E: XS Worker Compensation Sta
Wells Fargo Bank, National Association	625 Marquette Avenue, 11th Floor Minneapolis, Minnesota 55479	1675	Evidence of insurance. All operations usual to County Governmental Entity as respects to the MCIA Series 2012 Bonds, Rosolution dated 1/10/12, Section 813.4. (See page 2) A3D	12/22/2016	GL EX AU WC	County of Mercer	McDade Administration Building 640 South Broad Street, PO Box 8068 Trenton, NJ 08650-0068	Company D: XS Liability \$10,000,000 XS of \$10,000,000, (\$10,000,000 Annual Aggregate) <input type="checkbox"/> Policy Term: 1/1/17 to 1/1/18 Policy # XCO0000261 Company E: XS Worker Compensation Sta
Wells Fargo Bank, National Association	625 Marquette Avenue, 11th Floor Minneapolis, Minnesota 55479	1675	Evidence of insurance. All operations usual to County Governmental Entity as respects to the MCIA Series 2012 Bonds, Rosolution dated 1/10/12, Section 813.4. (See page 2) A3D	12/22/2016	GL EX AU WC	Mercer County Improvement Authority	80 Hamilton Avenue, 2nd Floor Trenton, NJ 08611	Company D: XS Liability \$10,000,000 XS of \$10,000,000, (\$10,000,000 Annual Aggregate) <input type="checkbox"/> Policy Term: 1/1/17 to 1/1/18 Policy # XCO0000261 Company E: XS Worker Compensation Sta
Hopewell Township	201 Washington Crossing-Pennington Road Titusville, NJ 08560	1677	Evidence of insurance. All operations usual to County Governmental Entity. (see page 2)	12/22/2016	GL EX AU WC	County of Mercer	McDade Administration Building 640 South Broad Street, PO Box 8068 Trenton, NJ 08650-0068	Company D: XS Liability \$10,000,000 XS of \$10,000,000, (\$10,000,000 Annual Aggregate) <input type="checkbox"/> Policy Term: 1/1/17 to 1/1/18 Policy # XCO0000546 Company E: XS Worker Compensation Statutory x \$1,000,000
Evidence of Insurance	Boys and Girls Club Spruce Street Community Center 1040 Spruce Street Lawrenceville, NJ 08648	1681	Evidence of insurance. All operations usual to a County Government Entity as respect to Resolution 2015-035,Authorizing the Issuance of Lease Revenue Bonds (County of Mercer Courthouse Annex Project). See page 2 A3D	12/22/2016	GL EX AU WC	Mercer County Improvement Authority	80 Hamilton Avenue, 2nd Floor Trenton, NJ 08611	Company D: XS Liability \$10,000,000 XS of \$10,000,000, (\$10,000,000 Annual Aggregate) <input type="checkbox"/> Policy Term: 1/1/17 to 1/1/18 Policy # XCO0000546 Company E: XS Worker Compensation Sta
Marci Rubin, Executive Director	Local Programs and Minibus Support One Penn Plaza East Newark, NJ 07105-2246	1688	Evidence of insurance. All operations usual to County Governmental Entity. (see page 2) A3D	12/22/2016	GL EX AU WC	County of Mercer	McDade Administration Building 640 South Broad Street, PO Box 8068 Trenton, NJ 08650-0068	Company D: XS Liability \$10,000,000 XS of \$10,000,000, (\$10,000,000 Annual Aggregate) <input type="checkbox"/> Policy Term: 1/1/17 to 1/1/18 Policy # XCO0000546 Company E: XS Worker Compensation Statutory x \$1,000,000
NJ Transit		1696	Certificate holder is additional insured where obligated by virtue of a written contract or written mutual aid agreement or other written agreement with the Named Assured, but only in respect to acts or operations by or on behalf of the Named Assured, and	12/13/2016	AU EX PHYS	County of Mercer	McDade Administration Building 640 South Broad Street, PO Box 8068 Trenton, NJ 08650-0068	NJ Transit # CS-676 VIN #: 1FD4E45PX8DA51070 as respects to: Vehicle #: 16-1754 Vehicle Type: 2016 E350 VIN #: 1FDEE3FS1GDC51304
NJ Transit Local Programs/Community Mobility	Christopher Uffer One Penn Plaza East, 4th Floor Newark, NJ 07105	1782	Certificate holder is additional insured and loss payee where obligated by virtue of a written contract or written mutual aid agreement or other written agreement with the Named Assured, but only in respect to acts or operations by or on behalf of the Na	12/13/2016	GL EX AU WC	County of Mercer	McDade Administration Building 640 South Broad Street, PO Box 8068 Trenton, NJ 08650-0068	Company D: XS Liability \$10,000,000 XS of \$10,000,000, (\$10,000,000 Annual Aggregate) <input type="checkbox"/> Policy Term: 1/1/17 to 1/1/18 Policy # XCO

Mercer County Insurance Commission
Certificate of Insurance Monthly Report
From 12/01/2016 to 01/31/2017

Holder Name	Holder Address	Holder Code	Description of Operations	Issue Date	Coverages	Insured Name	Insured Address	Description of Operations (continued)
Panek's Golf Car Service CO	374 Eggerts Crossing Rd Ewing, NJ 08638	1783	Certificate holder is additional insured and loss payee where obligated by virtue of a written contract or written mutual aid agreement or other written agreement with the Named Assured, but only in respect to acts or operations by or on behalf of the Nam	12/22/2016	GL EX AU WC	County of Mercer	McDade Administration Building 640 South Broad Street, PO Box 8068 Trenton, NJ 08650-0068	Company D: XS Liability \$10,000,000 XS of \$10,000,000, (\$10,000,000 Annual Aggregate) □ Policy Term: 1/1/17 to 1/1/18 Policy # XCO0000546 Company E: XS Worker Compensation Sta
State of New Jersey		1808	State of New Jersey, New Jersey Department of Environmental Protection, Division of Parks and Forestry, New Jersey State Park Service, D & R Canal State Park, New Jersey Water Supply Authority are additional insured where obligated by virtue of a written	12/22/2016	GL EX AU WC	County of Mercer	McDade Administration Building 640 South Broad Street, PO Box 8068 Trenton, NJ 08650-0068	by or on behalf of the Named Assured, and subject to the limitations on coverage contained in any such written contract or written mutual aid agreement or other written agreement. A3D Company D: XS Liability \$10,000,000 XS of \$10,000,000, (
Hamilton Township Board of Education	90 Park Avenue Hamilton, NJ 08690	1848	Evidence of insurance. All operations usual to County Governmental Entity as respects Mercer County Prosecutors Swearing in. (see page 2) A3D	1/4/2017	AU EX PHYS	County of Mercer	McDade Administration Building 640 South Broad Street, PO Box 8068 Trenton, NJ 08650-0068	Company D: XS Liability \$10,000,000 XS of \$10,000,000, (\$10,000,000 Annual Aggregate) Policy Term: 1/1/17 to 1/1/18 Policy # XCO0000702 Company E: XS Worker Compensation Statutory x \$1,000,000 XS Employers Liabil
Hamilton Township Board of Education	90 Park Avenue Hamilton, NJ 08690	1848	Evidence of insurance. All operations usual to County Governmental Entity as respects Mercer County Prosecutors Swearing in. (see page 2) A3D	1/4/2017	PR	County of Mercer	McDade Administration Building 640 South Broad Street, PO Box 8068 Trenton, NJ 08650-0068	
Hamilton Township Board of Education	90 Park Avenue Hamilton, NJ 08690	1848	Evidence of insurance. All operations usual to County Governmental Entity as respects Mercer County Prosecutors Swearing in. (see page 2) A3D	1/4/2017	GL EX AU WC	County of Mercer	McDade Administration Building 640 South Broad Street, PO Box 8068 Trenton, NJ 08650-0068	Company D: XS Liability \$10,000,000 XS of \$10,000,000, (\$10,000,000 Annual Aggregate) Policy Term: 1/1/17 to 1/1/18 Policy # XCO0000702 Company E: XS Worker Compensation Statutory x \$1,000,000 XS Employers Liabil
Joint Base	McGuire-Dix-Lakehurst JBMDL, NJ 08641	1852	Evidence of insurance. All operations usual to County Governmental Entity as respects Benefical Mutual Savings Bank.	1/18/2017	GL EX AU WC	County of Mercer	McDade Administration Building 640 South Broad Street, PO Box 8068 Trenton, NJ 08650-0068	Company D: XS Liability \$10,000,000 XS of \$10,000,000, (\$10,000,000 Annual Aggregate) Policy Term: 1/1/17 to 1/1/18 Policy # XCO0000702 Company E: XS Worker Compensation Statutory x \$1,000,000 XS Employers Liability
Total # of Holders =			65					